



# WYNDHAM CLUB BEACH

**DISCOVERY**  
BY WYNDHAM

2024-2025

# WELCOME

It's a wild, wonderful life out there and adventure awaits. Your bucket list is your chance to explore it.

Congratulations on becoming a Discovery by Wyndham ('Discovery') member.

You now have the unique opportunity to preview vacation ownership with Club Wyndham South Pacific and experience first-hand some of the amazing resorts and lifestyle benefits usually only available to Club Wyndham South Pacific owners.

Whether it's a quick weekend getaway or a more relaxed escape, we're confident you will truly enjoy the stunning destinations, quality accommodation and our signature **Hospitality with Heart**, allowing you to make an informed choice about joining Club Wyndham South Pacific.

Everything you need to start ticking off your bucket list can be found in this Discovery Program Guide, at [discoverybywyndham.com](http://discoverybywyndham.com) or by contacting your dedicated Discovery Service Specialist team using the contact details on the back cover.

Dream big. Dive in. Live wide. Explore far.

Your holidays are calling!



# CONTENTS

RESORT LOCATIONS	4
GETTING STARTED	6
UNDERSTANDING DISCOVERY CREDITS	8
RESERVATION HINTS AND TIPS	9
HOUSEKEEPING	10
HOLIDAY INSPIRATION	12
RESORTS	14
<b>FIJI</b>	
Denarau Island	15
<b>QUEENSLAND</b>	
Port Douglas, Tropical North Queensland	17
Airlie Beach, Whitsundays	18
Marcoola Beach, Sunshine Coast	19
Golden Beach, Sunshine Coast	20
Surfers Paradise, Gold Coast	21
Kirra Beach, Gold Coast	22
<b>NEW SOUTH WALES</b>	
Coffs Harbour, Mid North Coast	23
Coffs Harbour (Terraces), Mid North Coast	24
Flynns Beach (Port Macquarie), Mid North Coast	25
Shoal Bay, Hunter Region	26
Sydney, City	27
<b>VICTORIA</b>	
Dinner Plain, High Country	28
Melbourne, City	29
Ballarat, Central Highlands	30
Torquay, Surf Coast	31
Phillip Island, Gippsland	32
<b>TASMANIA</b>	
Seven Mile Beach, Hobart	33
<b>WESTERN AUSTRALIA</b>	
Perth, City	34
Dunsborough, Margaret River Region	35
<b>NEW ZEALAND</b>	
Rotorua, North Island	38
Wanaka, South Island	39
<b>THAILAND</b>	
Phuket	41
RESORT FACILITIES	42
PROGRAM GUIDELINES	44
LIFESTYLE BY WYNDHAM	49
WHY CLUB WYNDHAM SOUTH PACIFIC?	50
TAKING THE NEXT STEP	51

# RESORT LOCATIONS

## FIJI

Denarau Island 15

## QUEENSLAND

Port Douglas, Tropical North Queensland 17

Airlie Beach, Whitsundays 18

Marcoola Beach, Sunshine Coast 19

Golden Beach, Sunshine Coast 20

Surfers Paradise, Gold Coast 21

Kirra Beach, Gold Coast 22

## NEW SOUTH WALES

Coffs Harbour, Mid North Coast 23

Coffs Harbour (Terraces), Mid North Coast 24

Flynns Beach (Port Macquarie), Mid North Coast 25

Shoal Bay, Hunter Region 26

Sydney, City 27

## VICTORIA

Dinner Plain, Mt Hotham (High Country) 28

Melbourne, City 29

Ballarat, Central Highlands 30

Torquay, Surf Coast 31

Phillip Island, Gippsland 32

## TASMANIA

Seven Mile Beach, Hobart 33

## WESTERN AUSTRALIA

Perth, City 34

Dunsborough, Margaret River Region 35

## NEW ZEALAND

Rotorua, North Island 37

Wanaka, South Island 38

## THAILAND

Phuket 41

## THAILAND

Phuket



Perth  
Dunsborough





**AUSTRALIA**

- Port Douglas
- Airlie Beach
- Marcoola Beach
- Golden Beach
- Surfers Paradise
- Kirra Beach
- Coffs Harbour
- Flynns Beach
- Port Macquarie
- Shoal Bay
- Sydney
- Dinner Plain
- Phillip Island
- Ballarat
- Torquay
- Melbourne
- Seven Mile Beach

**FIJI**

- Denarau Island

**NEW ZEALAND**

- Wanaka
- Rotorua

Note: Map not to scale

Wander across town, across country, or across the ocean. No matter what's on your bucket list, this is your chance to live it.

# GETTING STARTED

As a Discovery member, you have the opportunity to experience some of the amazing lifestyle benefits that will become available to you should you choose to become a Club Wyndham South Pacific owner.

Your Discovery membership provides access to:

- Club Wyndham resorts across Australia, New Zealand, Fiji and Thailand
- Complimentary Lifestyle by Wyndham membership for the duration of your Discovery membership
- An allotment of Discovery Credits valid for 12 months to use for one or more reservations (each Discovery credit is for one-time use)
- A 12-month reservation booking window
- One housekeeping token

**PLUS! A DEDICATED DISCOVERY SERVICE SPECIALIST TEAM TO ASSIST YOU WITH ALL YOUR DISCOVERY RESERVATIONS AND QUESTIONS**

To make the most of your Discovery membership, we encourage you to plan your holidays in advance wherever possible. This allows more flexibility with your preferred destinations, travel dates and resort apartment options.

Your Discovery Service Specialist team is available to assist you with your holidays, your way.

## DISCOVERY MEMBERSHIP



**DAY 1**

**MEMBERSHIP APPLICATION:**

Congratulations, your holidays await!



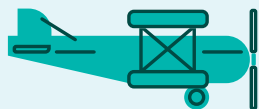
**DAY 12**

**ACCOUNT SET UP:**

Your account is active, you can now make holiday bookings

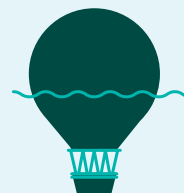
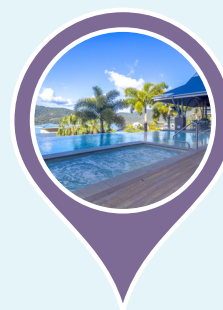
**BOOK NOW:** Book early to secure your preferred availability.





#### Things to know:

1. A dedicated Discovery Specialist will be in touch as soon as your Discovery membership account is set up, which will be within 12 calendar days of joining.
2. You may book your reservations as soon as your account is set up.
3. You may check-in for your first holiday as soon as you have reached the minimum threshold amount.
4. Your Discovery Credits are valid for 12 months from the date you reach your minimum threshold amount. Note: if you have paid the minimum threshold up front or paid in full, your Discovery credits will be valid to make bookings for 12 months from your account set up date.



## TIMELINE



### MONTH 5-7

#### TRAVEL ACTIVATION DATE:

You have met the minimum threshold amount of AU\$1,100 or NZ\$1,350. You can now check-in for your already booked holidays (or make new bookings)

**HINT:** If you want to travel earlier, you can! Just make a payment to top your account up to the minimum threshold amount.



### MONTH 17-19

#### CREDIT EXPIRY:

Your Discovery Credits expire 12 months after your Travel Activation Date and you have a further 12 months after their expiry to travel. Just ensure you have them all booked into your reservations before they expire!



### MONTH 29-31

#### MEMBERSHIP EXPIRY:

All your wonderful holidays should be complete and your Discovery benefits including Price Freeze & Equity will finish.



# UNDERSTANDING DISCOVERY CREDITS

Understanding your Discovery Credits is as easy as 1, 2, 3, 4! Simply choose where you would like to go, when you would like to go, the room you want to stay in and the nights of the week you would like to stay.

## 1 CHOOSE YOUR RESORT LOCATION



## 2 CHOOSE YOUR SEASON

2

BLUE	LOW SEASON
WHITE	MEDIUM SEASON
RED	HIGH SEASON

## 3 CHOOSE YOUR ROOM TYPE



## 4 CHOOSE YOUR NIGHTS

4

		Nightly Rate (in Credits)			Weekly Total
		Mon-Thu	Fri-Sat	Sun	
1-Bedroom (Sleeps 4)	BLUE	450	825	550	4000
	WHITE	700	1125	950	6000
	RED	1000	1450	1100	8000





# RESERVATION HINTS AND TIPS

## HOW TO MAKE A RESERVATION

Once you have chosen where and when you would like to holiday, simply contact your dedicated Discovery Service Specialist team using the details below and pack your bags!

- AUS 1300 306 026 | NZ 0800 306 026
- [discoveryteam@wyn.com](mailto:discoveryteam@wyn.com)

## RESERVATION WAITLISTS

All reservations are on a first in, first served basis and are subject to availability. If you are not able to book your first preference, you may request a waitlist for your desired resort or dates and be notified should they become available.

## LENGTH OF STAY

To ensure all Discovery members are able to get the most out of their Discovery memberships, the following guidelines apply, which are explained further in the full Program Guidelines starting on page 44.

- A minimum seven-night stay is required during Red Season 1 and 2 when reservations are made more than nine months in advance
- There is no seven-night minimum stay in Red season 3 to 9, White or Blue season
- A minimum two-night stay is required on weekends when staying either a Friday OR Saturday night
- Only one Friday AND Saturday two-night booking 'Weekend Only' may be reserved on a Discovery membership at any one time for each full block of 6,000 Discovery Credits held

For example, a Discovery membership with 20,000 Discovery Credits would be able to have three 'Weekend-Only' reservations at any one time on the account.

## RENTAL CREDITS

If you have really enjoyed your Discovery membership and utilised nearly all of your Discovery Credits to stay at resorts included in the Discovery Program, you may not have quite enough Discovery Credits left to complete one last reservation. This is where Rental Credits come in handy!

Rental Credits may be purchased to complete a reservation if made in conjunction with Discovery Credits and are for one-time use. For the current Rental Credit rates, please contact your Discovery Service Specialist Team.

## RESERVATION AMENDMENTS AND CANCELLATIONS

Sometimes life gets in the way and plans change. If you are not able to take the wonderful Discovery holiday you have planned, make sure you contact your Discovery Service Specialist team as soon as possible so that you don't miss out altogether.

Provided amendments and cancellations are made within the guidelines below (and further outlined from page 44), there is no penalty to you and other Discovery members can enjoy the space in your place.

To make it easy for you though, the last date for cancellation without penalty will be noted on your reservation confirmation.

FOR RESERVATIONS MADE:	CANCELLATIONS WILL BE ACCEPTED:
12 months to 61 days in advance	30 days before use
60 days to 15 days in advance	10 days before use
14 days to 48 hours in advance	48 hours before use
48 hours to 0 hours in advance	No cancellation allowed

# HOUSEKEEPING

TO ENSURE EVERYONE ENJOYS A HIGH QUALITY RESORT APARTMENT AT ALL RESORTS IN THE DISCOVERY PROGRAM, A HOUSEKEEPING SERVICE WILL OCCUR AT THE END OF EACH STAY TO RETURN IT TO 'AS NEW' CONDITION FOR THE NEXT GUESTS.

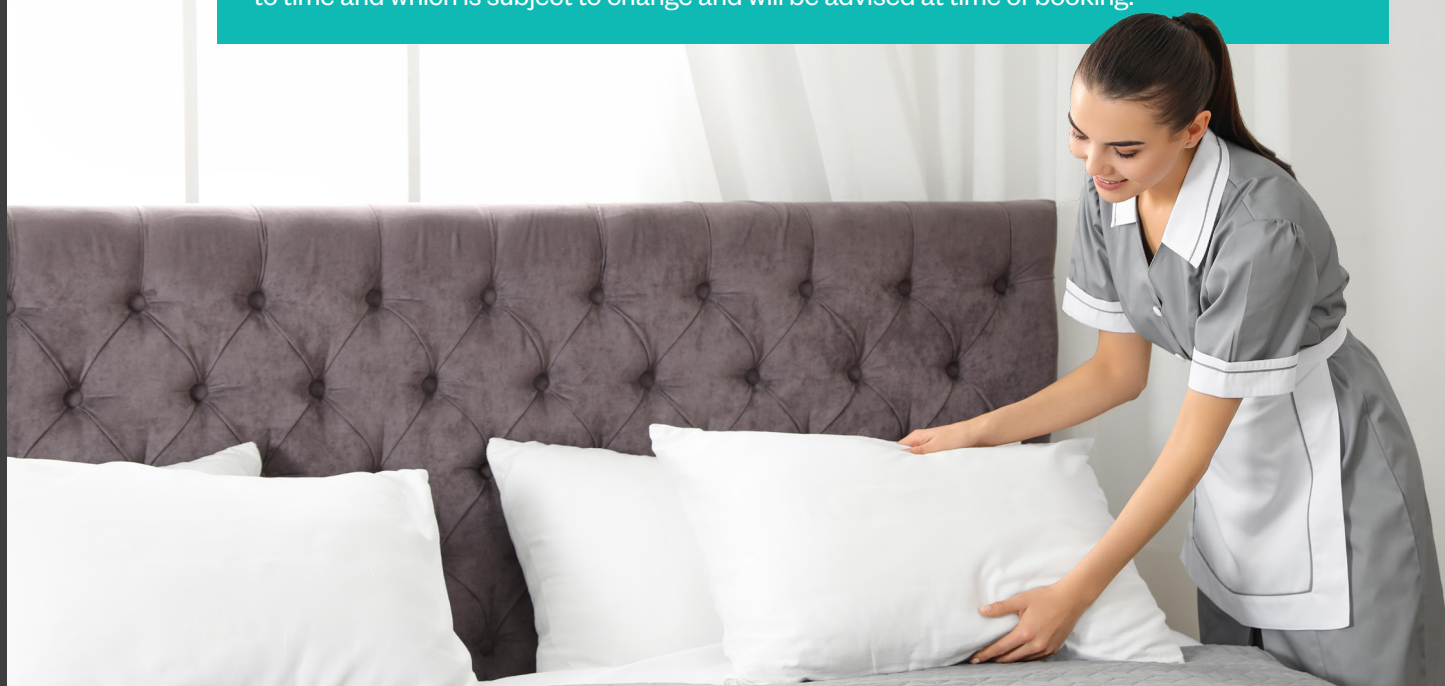
A great benefit of your Discovery membership is that it includes one housekeeping token, which may be used for a continuous resort stay in one resort apartment (in addition to the Discovery Credits for that reservation).

For any additional resort stays you will simply need to use your Discovery Credits for accommodation and pay the applicable housekeeping fee – which will depend on room size and type – per resort apartment at the time of making your Discovery reservation. For current housekeeping fees, please see below. Housekeeping is payable at time of reservation and will occur after check-out.



Room Type	Fee (inc. GST)*			
	Standard	Deluxe	Grand	Presidential
Studio	\$106.00	\$115.00	\$131.00	\$148.00
1-bedroom	\$121.00	\$129.00	\$145.00	\$160.00
2-bedroom	\$134.00	\$143.00	\$157.00	\$171.00
3-bedroom	\$148.00	\$154.00	\$168.00	\$226.00
4-bedroom		\$165.00	\$221.00	\$250.00

Please note that in addition to the above, any housekeeping fees incurred in Fiji will attract the Services Turnover Tax (STT) or other tax as may be levied by the Fijian Government from time to time and which is subject to change and will be advised at time of booking.



# DISCOVER MORE



## KID'S CLUBS

Kid's clubs are located at the following resorts (seasonal):

- Club Wyndham Denarau Island ..... p 15
- Club Wyndham Kirra Beach ..... p 22
- Club Wyndham Flynns Beach ..... p 25
- Club Wyndham Ballarat ..... p 30



## SURFING

Surfing locations can be found near the following resorts:

- Club Wyndham Surfers Paradise ..... p 21
- Club Wyndham Kirra Beach ..... p 22
- Club Wyndham Coffs Harbour ..... p 23
- Club Wyndham Coffs Harbour - Terraces ..... p 24
- Club Wyndham Sydney ..... p 27
- Club Wyndham Torquay ..... p 31
- Club Wyndham Dunsborough ..... p 35



## GOLF

Golf courses can be found near the following resorts:

- Club Wyndham Denarau Island ..... p 15
- Club Wyndham Airlie Beach Whitsundays ..... p 18
- Club Wyndham Coffs Harbour ..... p 23
- Club Wyndham Coffs Harbour - Terraces ..... p 24
- Club Wyndham Shoal Bay ..... p 26
- Club Wyndham Seven Mile Beach ..... p 33



## HIKING

Hiking tracks can be found near the following resorts:

- Club Wyndham Golden Beach ..... p 20
- Club Wyndham Dinner Plain ..... p 28
- Club Wyndham Torquay ..... p 31
- Club Wyndham Seven Mile Beach ..... p 33
- Club Wyndham Rotorua ..... p 38
- Club Wyndham Wanaka ..... p 39
- Club Wyndham Sea Pearl Phuket ..... p 41



# HOLIDAY INSPIRATION

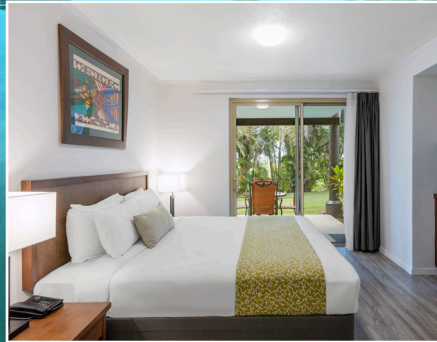
Your Discovery membership gives you access to 23 fantastic Club Wyndham South Pacific resorts in stunning destinations across Australia, New Zealand, Fiji and Thailand. Whether you are after a beachside escape or a city stay, here is some inspiration for the holidays you can have during your membership.



## 7 NIGHTS

FIJI  
10,000 Discovery Credits

ROOM:	1-bedroom
NIGHTS:	7 nights
SEASON:	Red



## 3 NIGHTS

### AIRLIE BEACH

3,950 Discovery Credits (long weekend)

ROOM:	1-bedroom
NIGHTS:	3 nights
SEASON:	White

## 7 NIGHTS

### TASMANIA

3,000 Discovery Credits

ROOM:	1-bedroom
NIGHTS:	7 nights
SEASON:	White



## 3 NIGHTS

### PORT MACQUARIE

2,950 Discovery Credits (long weekend)

ROOM:	1-bedroom Deluxe Garden
NIGHTS:	3 nights
SEASON:	Blue

# 7 NIGHTS KIRRA BEACH

9,000 Discovery Credits

ROOM:	2-bedroom
NIGHTS:	7 nights
SEASON:	White



# 7 NIGHTS PHILLIP ISLAND

5,100 Discovery Credits

ROOM:	3-bedroom
NIGHTS:	7 nights
SEASON:	Blue

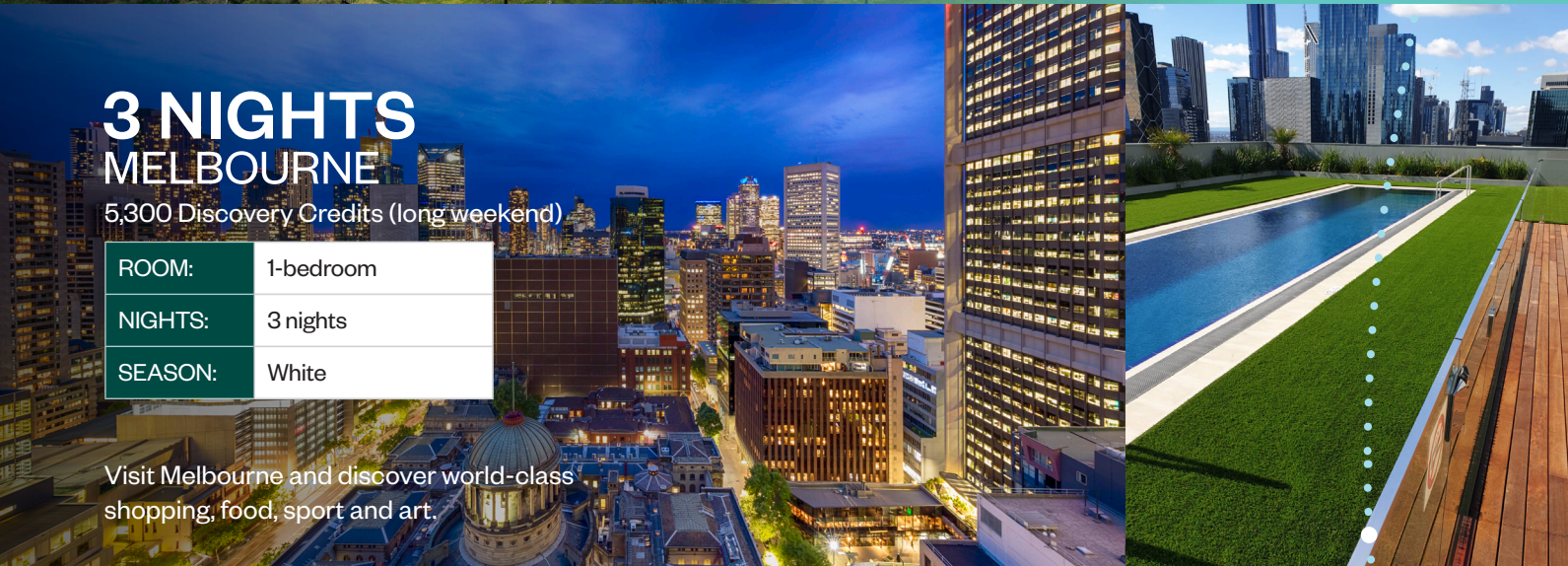


# 3 NIGHTS MELBOURNE

5,300 Discovery Credits (long weekend)

ROOM:	1-bedroom
NIGHTS:	3 nights
SEASON:	White

Visit Melbourne and discover world-class shopping, food, sport and art.

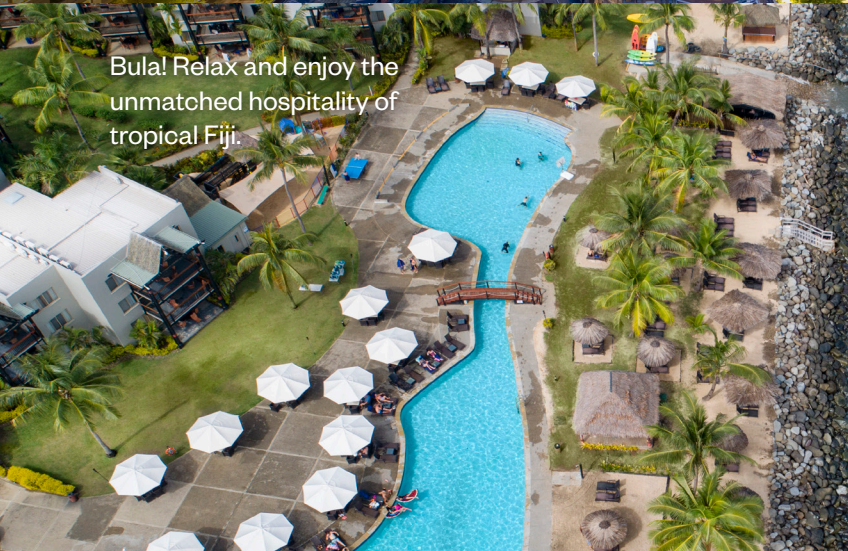


Bula! Relax and enjoy the unmatched hospitality of tropical Fiji.

# 7 NIGHTS FIJI

15,500 Discovery Credits

ROOM:	2-bedroom Deluxe
NIGHTS:	7 nights
SEASON:	Red





# FIJI



Whether you seek a romantic escape, an unforgettable family holiday or simply a chance to experience a new and beautiful culture, Fiji ticks all the boxes and so much more. A collection of 333 delightful tropical islands, Fiji is famous for its unsurpassable hospitality and locals who will feel like family by the end of your trip. From the rainforest to the reef and everything in between, Fiji is yours to discover.



## EXCITING CULTURE

Travelling with the award-winning Sigatoka River Safari is one of the best ways to experience Fiji's unique cultural attractions. The islands are also renowned for being home to some of the friendliest people in the world. Make sure you visit a village to sing and dance with the locals or enjoy a kava ceremony.

## ISLAND DAY TOURS

Fiji has many treasures to see and hidden landscapes to explore. Day trips to the best coral reefs and secluded islands can be booked from your resort.

# DENARAU ISLAND

FIJI



## CLUB WYNDHAM DENARAU ISLAND

 NAREWA ROAD, NADI, DENARAU ISLAND, FIJI



2-bedroom standard



2-bedroom Deluxe



Maravu Adults Pool

Famous for its warm and friendly locals and incredible natural sights including waterfalls, rainforests, coral reefs and famous surf breaks, Fiji has it all.

Club Wyndham Denarau Island is set in the midst of this paradise and gives you the freedom to do as much or as little as you like. Visit the resort's tour desk to organise snorkelling or diving at the reef, or immerse yourself in the local culture by visiting a nearby village to experience traditional singing and dancing, and a kava ceremony. Alternatively, relax and enjoy the resort's first-class facilities which include an onsite day spa, adults-only pool, restaurant and comprehensive kids' activities.

### LOCAL ATTRACTIONS (Distances are listed as an approximate indication only)

- Denarau Golf and Racquet Club 700m
- Port Denarau Marina 2km
- Nadi 10.6km
- Nadi International Airport 17.2km
- Garden of the Sleeping Giant 23.3km
- Mamanuca Islands 33km
- Lautoka City 38km
- Koroyanitu National Heritage Park 39km
- Natadola Beach 55km
- Sigatoka River Safari 68km

 Game fishing, island day trips, white water rafting

 Free but limited onsite car parking available

#### PLEASE NOTE:

Most tour buses/operators will pick up and drop off from the resort.

### SEASONALITY

2024	
1 Jan - 31 Dec	RED

2025	
1 Jan - 31 Dec	RED

### CREDIT CHARTS

1-Bedroom (Sleeps 4)				
Season	Nightly Rate (in Vacation Credits)			Weekly Total
	Mon-Thu	Fri-Sat	Sun	
RED	1250	1800	1400	10000

1-Bedroom Deluxe (Sleeps 4)				
Season	Nightly Rate (in Vacation Credits)			Weekly Total
	Mon-Thu	Fri-Sat	Sun	
RED	1500	2100	1800	12000

2-Bedroom (Sleeps 6)				
Season	Nightly Rate (in Vacation Credits)			Weekly Total
	Mon-Thu	Fri-Sat	Sun	
RED	1500	2100	1800	12000

2-Bedroom Deluxe (Sleeps 6)				
Season	Nightly Rate (in Vacation Credits)			Weekly Total
	Mon-Thu	Fri-Sat	Sun	
RED	1950	2650	2400	15500

3-Bedroom (Sleeps 8)				
Season	Nightly Rate (in Vacation Credits)			Weekly Total
	Mon-Thu	Fri-Sat	Sun	
RED	1750	2450	2100	14000

3-Bedroom Deluxe (Sleeps 8)				
Season	Nightly Rate (in Vacation Credits)			Weekly Total
	Mon-Thu	Fri-Sat	Sun	
RED	2150	2900	2600	17000

3-Bedroom Deluxe Part Ocean (Sleeps 8)				
Season	Nightly Rate (in Vacation Credits)			Weekly Total
	Mon-Thu	Fri-Sat	Sun	
RED	2400	3300	2800	19000

3-Bedroom Grand Garden View (Sleeps 6)				
Season	Nightly Rate (in Vacation Credits)			Weekly Total
	Mon-Thu	Fri-Sat	Sun	
RED	2650	3600	3200	21000



# AUSTRALIA



Discovery by Wyndham features resorts that are close to Australia's most breathtaking beaches, reefs, rainforests, and cities - meaning your next getaway will be jam-packed with discoveries from the moment you arrive.

**DUNSBOROUGH**

**PORT DOUGLAS**

**FLYNNS BEACH**

**DINNER PLAIN**

**SEVEN MILE BEACH**

WESTERN AUSTRALIA

NORTHERN TERRITORY

QUEENSLAND

SOUTH AUSTRALIA

NEW SOUTH WALES

VICTORIA

TASMANIA



# PORT DOUGLAS

## TROPICAL NORTH QUEENSLAND



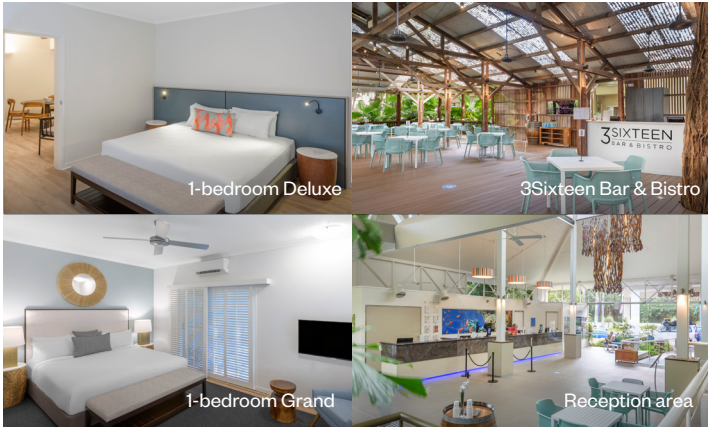
### CLUB WYNDHAM PORT DOUGLAS

316 PORT DOUGLAS ROAD, PORT DOUGLAS,  
QLD, 4877, AUSTRALIA

With lush rainforest to the west and sun-drenched coastline to the east, Port Douglas is a tropical beachside oasis and is the perfect place to escape the pressures of life. The resort boasts a lagoon pool with waterfall and swim-up bar and a luxurious day spa. The onsite restaurant, 3Sixteen Bar & Bistro offers delicious choices for breakfast, lunch and dinner.

#### LOCAL ATTRACTIONS (Distances are listed as an approximate indication only)

- Four Mile Beach (patrolled) 1.3km
- The Reef Marina 3.9km
- Port Village Shopping Centre 4.5km
- Mossman Gorge 18.6km
- Palm Cove 39.4km
- Skyrail Rainforest Cableway 51.2km
- Cairns International Airport 62.5km
- Cape Tribulation 81km



Dining, shopping, golf, Daintree Rainforest, Great Barrier Reef, whale watching (seasonal).

Free but limited onsite car parking available

#### SEASONALITY

2024		2025	
1 Jan - 19 Jan	RED 4	1 Jan - 24 Jan	RED 4
20 Jan - 2 Feb	WHITE	25 Jan - 7 Feb	WHITE
3 Feb - 29 Mar	BLUE	8 Feb - 4 Apr	BLUE
30 Mar - 12 Apr	RED 2	5 Apr - 11 Apr	RED 4
13 Apr - 10 May	RED 4	12 Apr - 25 Apr	RED 2
11 May - 21 Jun	RED 3	26 Apr - 16 May	RED 4
22 Jun - 5 Jul	RED 1	17 May - 27 Jun	RED 3
6 Jul - 19 Jul	RED 2	28 Jun - 11 Jul	RED 1
20 Jul - 13 Sep	RED 3	12 Jul - 25 Jul	RED 2
14 Sep - 20 Sep	RED 1	26 Jul - 19 Sep	RED 3
21 Sep - 27 Sep	RED 2	20 Sep - 26 Sep	RED 1
28 Sep - 25 Oct	RED 4	27 Sep - 3 Oct	RED 2
26 Oct - 22 Nov	WHITE	4 Oct - 31 Oct	RED 4
23 Nov - 6 Dec	BLUE	1 Nov - 28 Nov	WHITE
7 Dec - 20 Dec	WHITE	29 Nov - 12 Dec	BLUE
21 Dec - 31 Dec	RED 4	13 Dec - 26 Dec	WHITE
		27 Dec - 31 Dec	RED 4

#### CREDIT CHARTS

Hotel Room (Sleeps 2)					Hotel Room Deluxe (Sleeps 2)					1-Bedroom (Sleeps 4)				
Season	Nightly Rate (in Vacation Credits)			Weekly Total	Season	Nightly Rate (in Vacation Credits)			Weekly Total	Season	Nightly Rate (in Vacation Credits)			Weekly Total
	Mon-Thu	Fri-Sat	Sun			Mon-Thu	Fri-Sat	Sun			Mon-Thu	Fri-Sat	Sun	
BLUE	300	650	500	3000	BLUE	400	800	600	3800	BLUE	550	1050	800	5100
WHITE	450	950	700	4400	WHITE	550	1200	900	5500	WHITE	750	1600	1200	7400
RED 4	550	1150	800	5300	RED 4	650	1400	1000	6400	RED 4	900	1850	1400	8700
RED 3	600	1250	900	5800	RED 3	750	1550	1200	7300	RED 3	1000	2100	1600	9800
RED 2	650	1400	1100	6500	RED 2	800	1700	1300	7900	RED 2	1100	2300	1700	10700
RED 1	800	1700	1300	7900	RED 1	1000	2100	1600	9800	RED 1	1350	2850	2100	13200

1-Bedroom Deluxe (Sleeps 4)					1-Bedroom Grand (Sleeps 2)					2-Bedroom (Sleeps 6)				
Season	Nightly Rate (in Vacation Credits)			Weekly Total	Season	Nightly Rate (in Vacation Credits)			Weekly Total	Season	Nightly Rate (in Vacation Credits)			Weekly Total
	Mon-Thu	Fri-Sat	Sun			Mon-Thu	Fri-Sat	Sun			Mon-Thu	Fri-Sat	Sun	
BLUE	600	1300	1000	6000	BLUE	900	1700	1300	8300	BLUE	650	1400	1100	6500
WHITE	900	1900	1400	8800	WHITE	1150	2450	1800	11300	WHITE	1000	2050	1500	9600
RED 4	1050	2250	1600	10300	RED 4	1350	2900	2050	13250	RED 4	1150	2450	1800	11300
RED 3	1200	2500	1800	11600	RED 3	1550	3200	2350	14950	RED 3	1300	2700	2000	12600
RED 2	1300	2750	2000	12700	RED 2	1700	3550	2600	16500	RED 2	1400	2950	2200	13700
RED 1	1600	3400	2600	15800	RED 1	2000	4200	3300	19700	RED 1	1750	3650	2700	17000

2-Bedroom Deluxe (Sleeps 6)				
Season	Nightly Rate (in Vacation Credits)			Weekly Total
	Mon-Thu	Fri-Sat	Sun	
BLUE	800	1650	1200	7700
WHITE	1200	2450	1800	11500
RED 4	1400	2850	2100	13400
RED 3	1500	3200	2400	14800
RED 2	1700	3500	2600	16400
RED 1	2050	4350	3300	20200



# AIRLIE BEACH

## WHITSUNDAYS



## CLUB WYNDHAM AIRLIE BEACH WHITSUNDAYS

9A HERMITAGE DR, AIRLIE BEACH  
QLD 4802, AUSTRALIA

A gateway to the spectacular Whitsunday Islands, Airlie Beach is a vibrant tropical destination popular worldwide. It is the perfect launching pad for activities on the water and in the lush rainforest of the Whitsunday Coast. From sailing, scuba diving and snorkelling, to jet-boat rides, rainforest tours and flying over the Great Barrier Reef, the Whitsundays has it all!

Boasting a magnificent location overlooking the Whitsunday Passage, Club Wyndham Airlie Beach Whitsundays features an open-air restaurant and bar, infinity pool and spa, gym, conference facilities, and undercover parking.

### LOCAL ATTRACTIONS (Distances are listed as an approximate indication only)

- Cruise Whitsundays Reefworld/Port of Airlie 1km
- Restaurants 1.1km
- Town Centre 1.4km
- Airlie Beach Lagoon 1.8km
- Whitehaven Beach Tour/Coral Sea Marina 3.7km
- Northerlies Beach Bar & Grill 13km
- Whitsundays Great Walk 19.4km
- Cedar Creek Falls 33km
- Whitsunday Coast Airport 40km

Dining, shopping, golf, tuk tuk tours, snorkelling tours, beachside markets, Whitsunday island day tours, stand up paddle boarding, kayaking.

Free but limited onsite car parking available

#### PLEASE NOTE:

The resort is located at the top of a hill, with steep pathways. Buildings are spread out across the grounds. This may pose a problem for those with mobility issues. Taxi may be a preferred mode of travel to/from the main centre of town as this walk may not be suitable for those with mobility issues or prams.



### SEASONALITY

2024		2025	
1 Jan - 19 Jan	RED 4	1 Jan - 24 Jan	RED 4
20 Jan - 1 Mar	BLUE	25 Jan - 7 Mar	BLUE
2 Mar - 29 Mar	WHITE	8 Mar - 4 Apr	WHITE
30 Mar - 12 Apr	RED 2	5 Apr - 11 Apr	RED 4
13 Apr - 10 May	RED 4	12 Apr - 25 Apr	RED 2
11 May - 21 Jun	RED 3	26 Apr - 16 May	RED 4
22 Jun - 5 Jul	RED 1	17 May - 27 Jun	RED 3
6 Jul - 19 Jul	RED 2	28 Jun - 11 Jul	RED 1
20 Jul - 13 Sep	RED 3	12 Jul - 25 Jul	RED 2
14 Sep - 20 Sep	RED 1	26 Jul - 19 Sep	RED 3
21 Sep - 27 Sep	RED 2	20 Sep - 26 Sep	RED 1
28 Sep - 11 Oct	RED 4	27 Sep - 3 Oct	RED 2
12 Oct - 8 Nov	WHITE	4 Oct - 17 Oct	RED 4
9 Nov - 6 Dec	BLUE	18 Oct - 14 Nov	WHITE
7 Dec - 31 Dec	RED 4	15 Nov - 12 Dec	BLUE
		13 Dec - 31 Dec	RED 4

### CREDIT CHARTS

1-Bedroom (Sleeps 2)					1-Bedroom Deluxe (Sleeps 2)					2-Bedroom (Sleeps 4)				
Season	Nightly Rate (in Vacation Credits)			Weekly Total	Season	Nightly Rate (in Vacation Credits)			Weekly Total	Season	Nightly Rate (in Vacation Credits)			Weekly Total
	Mon-Thu	Fri-Sat	Sun			Mon-Thu	Fri-Sat	Sun			Mon-Thu	Fri-Sat	Sun	
BLUE	700	950	800	5500	BLUE	800	1050	900	6200	BLUE	850	1150	1000	6700
WHITE	1050	1450	1200	8300	WHITE	1200	1600	1350	9350	WHITE	1300	1750	1500	10200
RED 4	1250	1750	1450	9950	RED 4	1400	1900	1600	11000	RED 4	1550	2100	1800	12200
RED 3	1350	1800	1550	10550	RED 3	1500	2000	1700	11700	RED 3	1650	2250	1900	13000
RED 2	1550	2100	1800	12200	RED 2	1750	2350	1950	13650	RED 2	1900	2600	2150	14950
RED 1	1850	2500	2100	14500	RED 1	2050	2750	2350	16050	RED 1	2250	3050	2550	17650

2-Bedroom Deluxe (Sleeps 4)					2-Bedroom Grand (Sleeps 4)					3-Bedroom Deluxe (Sleeps 6)				
Season	Nightly Rate (in Vacation Credits)			Weekly Total	Season	Nightly Rate (in Vacation Credits)			Weekly Total	Season	Nightly Rate (in Vacation Credits)			Weekly Total
	Mon-Thu	Fri-Sat	Sun			Mon-Thu	Fri-Sat	Sun			Mon-Thu	Fri-Sat	Sun	
BLUE	1100	1500	1250	8650	BLUE	1350	1800	1500	10500	BLUE	1300	1750	1450	10150
WHITE	1650	2250	1900	13000	WHITE	2000	2700	2250	15650	WHITE	1900	2600	2200	15000
RED 4	2000	2700	2250	15650	RED 4	2400	3250	2750	18850	RED 4	2300	3150	2650	18150
RED 3	2100	2850	2400	16500	RED 3	2500	3400	2900	19700	RED 3	2450	3300	2800	19200
RED 2	2400	3300	2750	18950	RED 2	2900	3950	3350	22850	RED 2	2800	3800	3200	22000
RED 1	2850	3900	3250	22450	RED 1	3450	4700	3950	27150	RED 1	3350	4500	3800	26200

\*The 3-Bedroom Presidential Suite is an Associate unit and is not part of Club Wyndham South Pacific. There is a 3-night minimum booking period for the 3-bedroom Presidential Suite.




# MARCOOLA BEACH

## SUNSHINE COAST



## CLUB WYNDHAM MARCOOLA BEACH


 923 DAVID LOW WAY, MARCOOLA BEACH, QLD, 4564, AUSTRALIA



Club Wyndham Marcoola Beach is a must-visit destination for all lovers of sun, sand and salt water. The resort is set directly on a golden stretch of beach, where you won't have to compete with crowds to swim or surf. Recharge at the heated pool or gym, or indulge with a luxurious spa treatment at the onsite day spa.

### LOCAL ATTRACTIONS (Distances are listed as an approximate indication only)

- Sunshine Coast Airport 500m
- Mount Coolum National Park 6.2km
- Maroochydore 11.8km
- SEA LIFE Sunshine Coast 17km
- Hastings Street (Noosa Heads) 26.9km
- Montville 30.9km
- Eumundi Markets 31.8km
- Australia Zoo 42.5km
- Maleny 44km
- Brisbane 114km

 Surfing lessons, pristine surf beaches, Noosa boutique shopping and dining, golf, whale watching (seasonal).

 Free but limited onsite car parking available

### SEASONALITY


2024		2025	
1 Jan - 19 Jan	RED 1	1 Jan - 24 Jan	RED 1
20 Jan - 16 Feb	RED 3	25 Jan - 21 Feb	RED 3
17 Feb - 22 Mar	RED 4	22 Feb - 28 Mar	RED 4
23 Mar - 29 Mar	RED 2	29 Mar - 18 Apr	RED 2
30 Mar - 5 Apr	RED 1	19 Apr - 25 Apr	RED 1
6 Apr - 26 Apr	RED 2	26 Apr - 2 May	RED 2
27 Apr - 17 May	BLUE	3 May - 23 May	BLUE
18 May - 21 Jun	WHITE	24 May - 27 Jun	WHITE
22 Jun - 12 Jul	RED 2	28 Jun - 18 Jul	RED 2
13 Jul - 26 Jul	RED 4	19 Jul - 1 Aug	RED 4
27 Jul - 9 Aug	BLUE	2 Aug - 15 Aug	BLUE
10 Aug - 13 Sep	WHITE	16 Aug - 19 Sep	WHITE
14 Sep - 4 Oct	RED 2	20 Sep - 10 Oct	RED 2
5 Oct - 18 Oct	RED 3	11 Oct - 24 Oct	RED 3
19 Oct - 29 Nov	RED 4	25 Oct - 5 Dec	RED 4
30 Nov - 6 Dec	RED 3	6 Dec - 12 Dec	RED 3
7 Dec - 13 Dec	RED 2	13 Dec - 19 Dec	RED 2
14 Dec - 31 Dec	RED 1	20 Dec - 31 Dec	RED 1

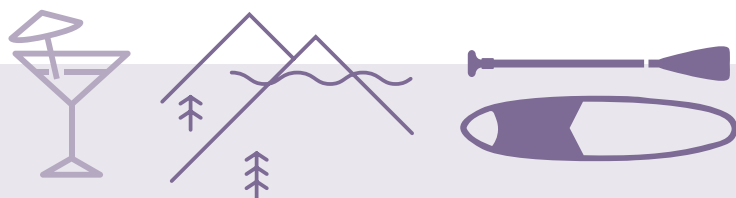
### CREDIT CHARTS

Hotel Room (Sleeps 2)					1-Bedroom (Sleeps 4)					2-Bedroom (Sleeps 6)				
Season	Nightly Rate (in Vacation Credits)			Weekly Total	Season	Nightly Rate (in Vacation Credits)			Weekly Total	Season	Nightly Rate (in Vacation Credits)			Weekly Total
	Mon-Thu	Fri-Sat	Sun			Mon-Thu	Fri-Sat	Sun			Mon-Thu	Fri-Sat	Sun	
BLUE	300	750	300	3000	BLUE	600	1650	600	6300	BLUE	800	2000	800	8000
WHITE	400	900	400	3800	WHITE	850	1875	850	8000	WHITE	1040	2400	1040	10000
RED 4	550	1025	550	4800	RED 4	1100	2250	1100	10000	RED 4	1400	2850	1400	12700
RED 3	650	1275	650	5800	RED 3	1300	2800	1300	12100	RED 3	1700	3400	1700	15300
RED 2	800	1550	800	7100	RED 2	1640	3350	1640	14900	RED 2	2100	4100	2100	18700
RED 1	1000	2050	1000	9100	RED 1	2100	4250	2100	19000	RED 1	2700	5250	2700	24000

2-Bedroom Deluxe (Sleeps 6)					3-Bedroom (Sleeps 8)					3-Bedroom Deluxe (Sleeps 8)				
Season	Nightly Rate (in Vacation Credits)			Weekly Total	Season	Nightly Rate (in Vacation Credits)			Weekly Total	Season	Nightly Rate (in Vacation Credits)			Weekly Total
	Mon-Thu	Fri-Sat	Sun			Mon-Thu	Fri-Sat	Sun			Mon-Thu	Fri-Sat	Sun	
BLUE	950	1850	1500	9000	BLUE	950	1900	1500	9100	BLUE	1050	2150	1700	10200
WHITE	1200	2400	1950	11550	WHITE	1250	2450	1950	11850	WHITE	1400	2750	2200	13300
RED 4	1500	2950	2400	14300	RED 4	1500	3000	2400	14400	RED 4	1700	3400	2750	16350
RED 3	1750	3550	2800	16900	RED 3	1800	3600	2850	17250	RED 3	2050	4050	3250	19550
RED 2	2150	4250	3400	20500	RED 2	2150	4350	3450	20750	RED 2	2450	4900	3900	23500
RED 1	2800	5550	4450	26750	RED 1	2850	5650	4550	27250	RED 1	3200	6400	5100	30700

For more resort details, visit [discoverybywyndham.com](https://discoverybywyndham.com)   
See pages 42-43 for resort facilities.



# GOLDEN BEACH

## SUNSHINE COAST



### CLUB WYNDHAM GOLDEN BEACH

75 ESPLANADE, GOLDEN BEACH, QLD, 4551, AUSTRALIA

Located on the calm waters of the Pumicestone Passage, Club Wyndham Golden Beach is the perfect place to unwind and forget your worries.

The waters are protected by Bribie Island and provide the perfect setting for water sports like kayaking and fishing. For board riders, surfing beaches are just a few minutes away by road.



1-bedroom



2-bedroom



### LOCAL ATTRACTIONS (Distances are listed as an approximate indication only)

- Caloundra Town Centre 3.8km
- Kings Beach 4.5km
- Queensland Air Museum 4.7km
- Aussie World 15.4km
- SEA LIFE Sunshine Coast 20km
- Australia Zoo 25km
- Sunshine Coast Airport 31.6km
- Glass House Mountains 38.9km
- Eumundi Markets 49.9km
- Noosa 57km
- Brisbane 96.2km

Beaches, kayaking, fishing rod and bike hire, Pumicestone Passage, whale watching (seasonal).

Free on-site parking available with limited undercover spaces and secure outdoor overflow parking

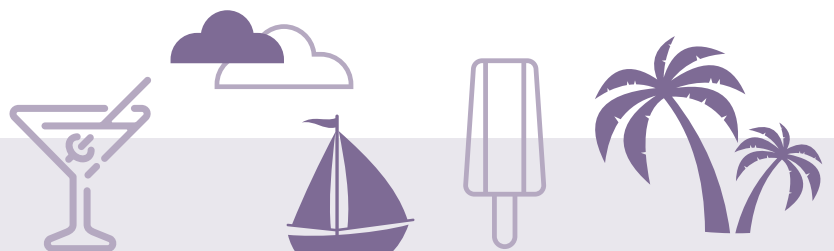
### SEASONALITY

2024	
1 Jan - 17 May	RED
18 May - 21 Jun	WHITE
22 Jun - 26 Jul	RED
27 Jul - 23 Aug	BLUE
24 Aug - 13 Sep	WHITE
14 Sep - 31 Dec	RED

2025	
1 Jan - 16 May	RED
17 May - 20 Jun	WHITE
21 Jun - 1 Aug	RED
2 Aug - 29 Aug	BLUE
30 Aug - 19 Sep	WHITE
20 Sep - 31 Dec	RED

### CREDIT CHARTS

1-Bedroom (Sleeps 4)						2-Bedroom (Sleeps 6)				
Season	Nightly Rate (in Vacation Credits)			Weekly Total		Season	Nightly Rate (in Vacation Credits)			Weekly Total
	Mon-Thu	Fri-Sat	Sun				Mon-Thu	Fri-Sat	Sun	
BLUE	450	825	550	4000		BLUE	700	1125	950	6000
WHITE	700	1125	950	6000		WHITE	1000	1450	1100	8000
RED	1000	1450	1100	8000		RED	1250	1800	1400	10000




For more resort details, visit [discoverybywyndham.com](http://discoverybywyndham.com)  
See pages 42-43 for resort facilities.

# SURFERS PARADISE

## GOLD COAST


### CLUB WYNDHAM SURFERS PARADISE


 3018 SURFERS PARADISE BLVD (CNR MARKWELL AVE), SURFERS PARADISE, QLD, 4217, AUSTRALIA

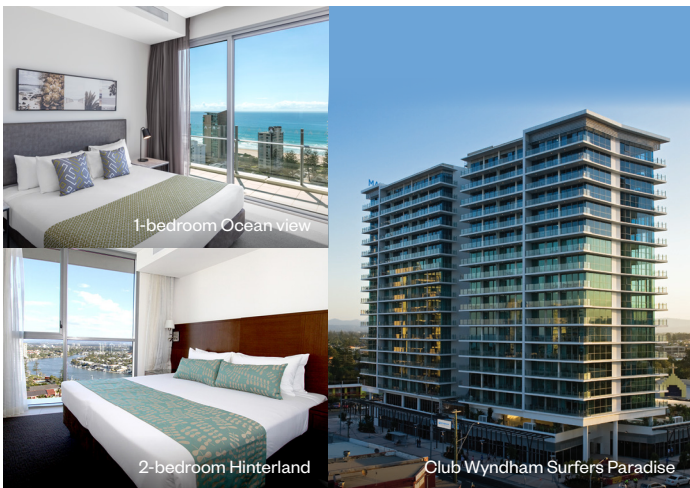
With golden beaches, famous theme parks and beautiful, temperate weather, the Gold Coast provides an endless array of possibilities for your holiday. Positioned right on the city's famous glitter strip, Wyndham Surfers Paradise is ideally located within walking distance of the coast's iconic beaches, shopping, dining and nightlife. The light rail line right outside makes the major restaurant and retail precincts easier than ever to access and broadens the area you can explore.

#### LOCAL ATTRACTIONS (Distances are listed as an approximate indication only)

- Q1 observation deck (Q Deck) 100m
- Gold Coast beaches (patrolled) 300m
- Cavill Avenue 600m
- The Star Gold Coast Casino 3km
- Sea World 5.6km
- Wet 'n' Wild 20km
- Warner Bros. Movie World 20km
- Gold Coast Airport (Coolangatta) 21km
- Dreamworld 25.4km
- Gold Coast hinterland/wineries 40km
- Brisbane City 81km
- Brisbane Airport 91km

 Dining, shopping, surfing lessons, Surf Lifesaving clubs, Surfers Paradise night life.


 Free undercover car parking available onsite.



#### SEASONALITY

2024		2025	
1 Jan - 12 Jan	RED 1	1 Jan - 17 Jan	RED 1
13 Jan - 26 Jan	RED 3	18 Jan - 24 Jan	RED 3
27 Jan - 16 Feb	WHITE	25 Jan - 31 Jan	RED 4
17 Feb - 29 Mar	RED 4	1 Feb - 21 Feb	WHITE
30 Mar - 5 Apr	RED 1	22 Feb - 4 Apr	RED 4
6 Apr - 12 Apr	RED 2	5 Apr - 11 Apr	RED 3
13 Apr - 26 Apr	RED 3	12 Apr - 18 Apr	RED 2
27 Apr - 17 May	WHITE	19 Apr - 25 Apr	RED 1
18 May - 21 Jun	RED 4	26 Apr - 2 May	RED 3
22 Jun - 5 Jul	RED 3	3 May - 23 May	WHITE
6 Jul - 19 Jul	RED 4	24 May - 27 Jun	RED 4
20 Jul - 2 Aug	BLUE	28 Jun - 25 Jul	RED 3
3 Aug - 30 Aug	WHITE	26 Jul - 8 Aug	BLUE
31 Aug - 13 Sep	RED 4	9 Aug - 15 Aug	WHITE
14 Sep - 20 Sep	RED 3	16 Aug - 29 Aug	RED 4
21 Sep - 27 Sep	RED 2	30 Aug - 19 Sep	WHITE
28 Sep - 18 Oct	RED 3	20 Sep - 26 Sep	RED 3
19 Oct - 13 Dec	RED 4	27 Sep - 3 Oct	RED 2
14 Dec - 20 Dec	RED 2	4 Oct - 17 Oct	RED 3
21 Dec - 31 Dec	RED 1	18 Oct - 19 Dec	RED 4
		20 Dec - 26 Dec	RED 2
		27 Dec - 31 Dec	RED 1

#### CREDIT CHARTS

1-Bedroom Low Floor (Sleeps 4) 					1-Bedroom Hinterland (Sleeps 4)					1-Bedroom Ocean View (Sleeps 4)							
Season	Nightly Rate (in Vacation Credits)				Weekly Total	Season	Nightly Rate (in Vacation Credits)				Weekly Total	Season	Nightly Rate (in Vacation Credits)				Weekly Total
	Mon-Thu	Fri-Sat	Sun	Mon-Thu			Fri-Sat	Sun	Mon-Thu	Fri-Sat			Sun				
BLUE	600	1075	750	5300	BLUE	700	1050	800	5700	BLUE	800	1650	1200	7700			
WHITE	800	1700	1300	7900	WHITE	1000	2050	1800	9900	WHITE	1400	3000	2200	13800			
RED 4	1100	2300	1800	10800	RED 4	1200	2600	2000	12000	RED 4	1800	3850	2900	17800			
RED 3	1500	2900	2200	14000	RED 3	1600	3450	2800	16100	RED 3	2200	4700	3500	21700			
RED 2	1800	3700	2700	17300	RED 2	1900	4100	3100	18900	RED 2	2600	5350	4000	25100			
RED 1	1900	3900	2900	18300	RED 1	2150	4600	3400	21200	RED 1	2800	5950	4400	27500			

2-Bedroom Low Floor (Sleeps 6)					2-Bedroom Hinterland (Sleeps 6)					2-Bedroom Ocean View (Sleeps 6)							
Season	Nightly Rate (in Vacation Credits)				Weekly Total	Season	Nightly Rate (in Vacation Credits)				Weekly Total	Season	Nightly Rate (in Vacation Credits)				Weekly Total
	Mon-Thu	Fri-Sat	Sun	Mon-Thu			Fri-Sat	Sun	Mon-Thu	Fri-Sat			Sun				
BLUE	750	1500	1200	7200	BLUE	800	1700	1300	7900	BLUE	1000	2050	1500	9600			
WHITE	1100	2100	1900	10500	WHITE	1500	3050	2300	14400	WHITE	1700	3550	2700	16600			
RED 4	1300	2800	2100	12900	RED 4	2000	4150	3100	19400	RED 4	2300	4750	3600	22300			
RED 3	1650	3500	2900	16500	RED 3	2500	5150	3900	24200	RED 3	2800	5800	4300	27100			
RED 2	1950	4200	3300	19500	RED 2	3000	6200	4600	29000	RED 2	3100	6550	4900	30400			
RED 1	2200	4700	3700	21900	RED 1	3100	6550	4900	30400	RED 1	3500	7200	5400	33800			

2-Bedroom Sky Suite (Sleeps 6)					
Season	Nightly Rate (in Vacation Credits)				Weekly Total
	Mon-Thu	Fri-Sat	Sun	Mon-Thu	
BLUE	1100	2200	1700	10500	
WHITE	2200	4450	3300	21000	
RED 4	2900	5900	4400	27800	
RED 3	3500	7200	5400	33800	
RED 2	3800	7900	5900	36900	
RED 1	4000	8400	6300	39100	





# KIRRA BEACH

## GOLD COAST

### CLUB WYNDHAM KIRRA BEACH


 CNR COYNE AND WINSTON STREETS, KIRRA BEACH, QLD, 4225, AUSTRALIA


Kirra Beach has an easy-going pace and characteristic charm more akin to a coastal village than a major city. At the southernmost tip of the Gold Coast, this hidden gem is a surfer's paradise. Club Wyndham Kirra Beach is just steps from golden sand and beautiful turquoise waters, and a stroll from some of the world's most famous surfing breaks, while the streets are lined with unique boutiques, cafés and restaurants to visit. Over the nearby New South Wales border lie dozens of quaint seaside and regional towns and villages ready to be explored.

If you choose to stay inside the resort bounds instead, the kids will love the heated pool, miniature golf course and children's playground.

#### LOCAL ATTRACTIONS (Distances are listed as an approximate indication only)

- Gold Coast Airport (in Coolangatta) 1.2km
- Currumbin Wildlife Sanctuary 5.3km
- The Star Gold Coast Casino 19.4km
- Gold Coast hinterland 27km
- Sea World 27.5km
- Surfers Paradise 27.8km
- Wet 'n' Wild 43km
- Warner Bros. Movie Wild 43km
- Dreamworld 48.4km
- Brisbane City 102km
- Brisbane Airport 110km

 Dining and shopping precinct, surfing lessons, Surf Lifesaving clubs.

 Free onsite, undercover car parking available.



2-bedroom Ocean View



1-bedroom Ocean View



Mini golf


#### SEASONALITY

2024	
1 Jan - 3 May	RED
4 May - 7 Jun	WHITE
8 Jun - 19 Jul	RED
20 Jul - 16 Aug	BLUE
17 Aug - 6 Sep	WHITE
7 Sep - 31 Dec	RED


  

2025	
1 Jan - 9 May	RED
10 May - 13 Jun	WHITE
14 Jun - 25 Jul	RED
26 Jul - 22 Aug	BLUE
23 Aug - 12 Sep	WHITE
13 Sep - 31 Dec	RED

#### CREDIT CHARTS

1-Bedroom (Sleeps 4) 				
Season	Nightly Rate (in Vacation Credits)			Weekly Total
	Mon-Thu	Fri-Sat	Sun	
BLUE	600	925	750	5000
WHITE	850	1250	1100	7000
RED	1100	1600	1400	9000

2-Bedroom (Sleeps 6) 				
Season	Nightly Rate (in Vacation Credits)			Weekly Total
	Mon-Thu	Fri-Sat	Sun	
BLUE	850	1250	1100	7000
WHITE	1100	1600	1400	9000
RED	1375	1950	1600	11000

2-Bedroom Deluxe (Sleeps 6)				
Season	Nightly Rate (in Vacation Credits)			Weekly Total
	Mon-Thu	Fri-Sat	Sun	
BLUE	1000	1450	1100	8000
WHITE	1250	1800	1400	10000
RED	1500	2100	1800	12000

3-Bedroom (Sleeps 8)				
Season	Nightly Rate (in Vacation Credits)			Weekly Total
	Mon-Thu	Fri-Sat	Sun	
BLUE	1100	1600	1400	9000
WHITE	1375	1950	1600	11000
RED	1625	2275	1950	13000



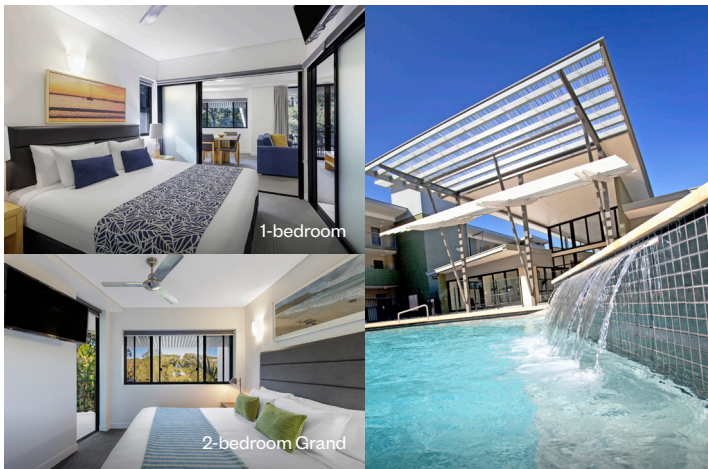
# COFFS HARBOUR

## MID NORTH COAST



## CLUB WYNDHAM COFFS HARBOUR

6 RESORT DRIVE, PACIFIC BAY RESORT PRECINCT, COFFS HARBOUR, NSW, 2450, AUSTRALIA



Nestled between magnificent mountain escarpments and the inviting ocean, Coffs Harbour is a piece of paradise for nature lovers. Located on the mid-North Coast of New South Wales, Coffs Harbour is a year-round beach holiday destination boasting golden beaches, superb fishing, family attractions, excellent shopping, and award-winning dining.

Perfectly positioned amongst picturesque natural surroundings, Club Wyndham Coffs Harbour provides various accommodation options and excellent facilities such as a heated pool and spa, barbecue area, golf course, tennis court, restaurant and bar, and day spa.

### LOCAL ATTRACTIONS (Distances are listed as an approximate indication only)

- Beaches (unpatrolled) 500m
- The Big Banana 1.6km
- Park Beach (patrolled) 4km
- Dolphin Marine Conversation Park 5km
- Town centre 5.5km
- Forest Sky Pier 7km
- Coffs Harbour Airport 7.7km
- Butterfly House 14.4km

- Surfing, water sports, horse riding, bushwalking, whale watching tours (seasonal).
- Free onsite car parking available, limited undercover car parking also available.

### SEASONALITY

2024		2025	
1 Jan - 19 Jan	RED 1	1 Jan - 24 Jan	RED 1
20 Jan - 26 Jan	RED 2	25 Jan - 31 Jan	RED 2
27 Jan - 9 Feb	WHITE	1 Feb - 14 Feb	WHITE
10 Feb - 22 Mar	RED 4	15 Feb - 28 Mar	RED 4
23 Mar - 29 Mar	RED 3	29 Mar - 11 Apr	RED 3
30 Mar - 5 Apr	RED 1	12 Apr - 18 Apr	RED 2
6 Apr - 12 Apr	RED 2	19 Apr - 25 Apr	RED 1
13 Apr - 26 Apr	RED 3	26 Apr - 2 May	RED 3
27 Apr - 10 May	RED 4	3 May - 16 May	RED 4
11 May - 7 Jun	BLUE	17 May - 13 Jun	BLUE
8 Jun - 21 Jun	WHITE	14 Jun - 27 Jun	WHITE
22 Jun - 28 Jun	RED 3	28 Jun - 4 Jul	RED 3
29 Jun - 5 Jul	RED 2	5 Jul - 11 Jul	RED 2
6 Jul - 19 Jul	RED 3	12 Jul - 25 Jul	RED 3
20 Jul - 16 Aug	BLUE	26 Jul - 22 Aug	BLUE
17 Aug - 30 Aug	WHITE	23 Aug - 5 Sep	WHITE
31 Aug - 13 Sep	RED 4	6 Sep - 19 Sep	RED 4
14 Sep - 11 Oct	RED 2	20 Sep - 17 Oct	RED 2
12 Oct - 22 Nov	RED 4	18 Oct - 28 Nov	RED 4
23 Nov - 13 Dec	RED 2	29 Nov - 19 Dec	RED 2
14 Dec - 31 Dec	RED 1	20 Dec - 31 Dec	RED 1

### CREDIT CHARTS

1-Bedroom (Sleeps 4)					1-Bedroom Deluxe (Sleeps 4)					2-Bedroom (Sleeps 6)				
Season	Nightly Rate (in Vacation Credits)			Weekly Total	Season	Nightly Rate (in Vacation Credits)			Weekly Total	Season	Nightly Rate (in Vacation Credits)			Weekly Total
	Mon-Thu	Fri-Sat	Sun			Mon-Thu	Fri-Sat	Sun			Mon-Thu	Fri-Sat	Sun	
BLUE	750	1600	1250	7450	BLUE	900	1950	1500	9000	BLUE	1050	2250	1750	10450
WHITE	900	1900	1400	8800	WHITE	1100	2300	1700	10700	WHITE	1250	2650	1900	12200
RED 4	1000	2100	1500	9700	RED 4	1200	2500	1800	11600	RED 4	1350	2850	2100	13200
RED 3	1150	2350	1800	11100	RED 3	1350	2850	2150	13250	RED 3	1550	3250	2500	15200
RED 2	1200	2500	1850	11650	RED 2	1450	3000	2220	14020	RED 2	1650	3450	2550	16050
RED 1	1250	2650	2000	12300	RED 1	1500	3150	2400	14700	RED 1	1750	3650	2750	17050

2-Bedroom Deluxe (Sleeps 6)					2-Bedroom Grand (Sleeps 4)					2-Bedroom Presidential (Sleeps 4)				
Season	Nightly Rate (in Vacation Credits)			Weekly Total	Season	Nightly Rate (in Vacation Credits)			Weekly Total	Season	Nightly Rate (in Vacation Credits)			Weekly Total
	Mon-Thu	Fri-Sat	Sun			Mon-Thu	Fri-Sat	Sun			Mon-Thu	Fri-Sat	Sun	
BLUE	1200	2600	2000	12000	BLUE	1550	3300	2550	15350	BLUE	1600	3450	2700	16000
WHITE	1450	3100	2250	14250	WHITE	1850	3950	2900	18200	WHITE	1950	4150	3000	19100
RED 4	1600	3350	2400	15500	RED 4	2050	4250	3100	19800	RED 4	2150	4450	3200	20700
RED 3	1800	3750	2900	17600	RED 3	2300	4800	3700	22500	RED 3	2400	5050	3850	23550
RED 2	1900	4000	3000	18600	RED 2	2450	5150	3800	23900	RED 2	2550	5350	4000	24900
RED 1	2000	4250	3200	19700	RED 1	2550	5450	4100	25200	RED 1	2700	5700	4300	26500

3-Bedroom (Sleeps 6)					3-Bedroom Grand (Sleeps 6)					3-Bedroom Deluxe (Sleeps 8)				
Season	Nightly Rate (in Vacation Credits)			Weekly Total	Season	Nightly Rate (in Vacation Credits)			Weekly Total	Season	Nightly Rate (in Vacation Credits)			Weekly Total
	Mon-Thu	Fri-Sat	Sun			Mon-Thu	Fri-Sat	Sun			Mon-Thu	Fri-Sat	Sun	
BLUE	1250	2750	2150	12650	BLUE	1950	4150	3200	19300	BLUE	1450	3200	2450	14650
WHITE	1550	3250	2400	15100	WHITE	2300	4900	3550	22550	WHITE	1750	3750	2750	17250
RED 4	1700	3550	2550	16450	RED 4	2550	5300	3800	24600	RED 4	1950	4050	2900	18800
RED 3	1900	4000	3050	18650	RED 3	2850	6000	4600	28000	RED 3	2200	4550	3500	21400
RED 2	2000	4250	3150	19650	RED 2	3000	6350	4700	29400	RED 2	2300	4850	3600	22500
RED 1	2150	4500	3400	21000	RED 1	3200	6750	5100	31400	RED 1	2450	5150	3900	24000

3-Bedroom Presidential (Sleeps 6)				
Season	Nightly Rate (in Vacation Credits)			Weekly Total
	Mon-Thu	Fri-Sat	Sun	
BLUE	2000	4300	3300	19900
WHITE	2450	5100	3700	23700
RED 4	2650	5500	4000	25600
RED 3	2950	6250	4750	29050
RED 2	3150	6650	4900	30800
RED 1	3300	7000	5300	32500

# COFFS HARBOUR

## MID NORTH COAST



### CLUB WYNDHAM COFFS HARBOUR - TERRACES

**📍 CHECK-IN AT: 6 RESORT DRIVE, PACIFIC BAY RESORT PRECINCT, COFFS HARBOUR, NSW, 2450, AUSTRALIA**

Club Wyndham Coffs Harbour - Terraces is surrounded by some of the most breathtaking national parks and beaches in Australia and Club Wyndham Coffs Harbour - Terraces is at the centre of it all. The resort gives you access to an impressive array of facilities including an adjacent golf course, pools, tennis court, day spa and magnificent gardens with a freshwater lagoon.



1-bedroom



2-bedroom



#### LOCAL ATTRACTIONS (Distances are listed as an approximate indication only)

- Beaches (unpatrolled) 500m
- The Big Banana 1.6km
- Park Beach (patrolled) 4km
- Dolphin Marine Conversation Park 5km
- Town centre 5.5km
- Forest Sky Pier 7km
- Coffs Harbour Airport 7.7km
- Butterfly House 14.4km
- Dorrigo Rainforest Centre 68.7km

- Surfing, water sports, horse riding, bushwalking, whale watching tours (seasonal).
- Free onsite car parking available, limited undercover car parking also available.

**PLEASE NOTE:**  
When booking at Club Wyndham Coffs Harbour - Terraces, the 2-bedroom apartment comprises of a 1-bedroom apartment and a studio room. These two rooms can each operate with their own entrance or utilising a shared outer entrance.

#### SEASONALITY

2024		2025	
1 Jan - 26 Jan	RED	1 Jan - 31 Jan	RED
27 Jan - 9 Feb	WHITE	1 Feb - 14 Feb	WHITE
10 Feb - 10 May	RED	15 Feb - 16 May	RED
11 May - 24 May	WHITE	17 May - 30 May	WHITE
25 May - 21 Jun	BLUE	31 May - 27 Jun	BLUE
22 Jun - 19 Jul	RED	28 Jun - 25 Jul	RED
20 Jul - 16 Aug	BLUE	26 Jul - 22 Aug	BLUE
17 Aug - 30 Aug	WHITE	23 Aug - 5 Sep	WHITE
31 Aug - 31 Dec	RED	6 Sep - 31 Dec	RED

#### CREDIT CHARTS

Studio (Sleeps 2)					1-Bedroom (Sleeps 4)				
Season	Nightly Rate (in Vacation Credits)			Weekly Total	Season	Nightly Rate (in Vacation Credits)			Weekly Total
	Mon-Thu	Fri-Sat	Sun			Mon-Thu	Fri-Sat	Sun	
BLUE	300	700	400	3000	BLUE	450	825	550	4000
WHITE	600	925	750	5000	WHITE	700	1125	950	6000
RED	850	1250	1100	7000	RED	1000	1450	1100	8000

2-Bedroom (Sleeps 6)				
Season	Nightly Rate (in Vacation Credits)			Weekly Total
	Mon-Thu	Fri-Sat	Sun	
BLUE	700	1125	950	6000
WHITE	1000	1450	1100	8000
RED	1250	1800	1400	10000

Please note that this property is managed by a third party and not by the Club or any associated Wyndham entity.



For more resort details, visit [discoverybywyndham.com](https://discoverybywyndham.com)  
See pages 42-43 for resort facilities.



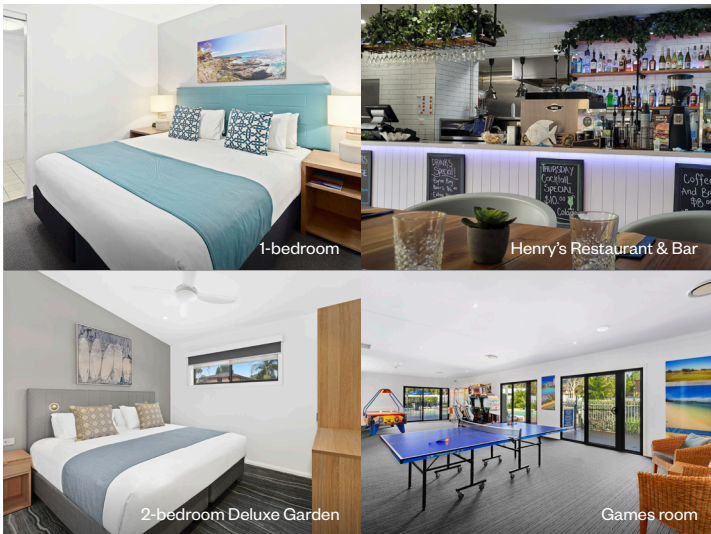
# FLYNN'S BEACH (PORT MACQUARIE)

## MID NORTH COAST



## CLUB WYNDHAM FLYNN'S BEACH

14-20 FLYNN STREET, PORT MACQUARIE, NSW, 2444, AUSTRALIA



Located on the mid-North Coast of New South Wales, Port Macquarie is the perfect option for a family beach holiday, just a one-hour flight or four-hour drive from Sydney.

Club Wyndham Flynn's Beach is set in a striking natural setting. This family-friendly resort boasts excellent facilities, including an outdoor pool, spa, children's pool, restaurant and bar, and barbecue areas.

### LOCAL ATTRACTIONS (Distances are listed as an approximate indication only)

- Restaurants 500m
- Flynn's Beach (patrolled) 500m
- Koala Hospital 500m
- Sea Acres Nature Reserve and Rainforest Centre 2.5km
- Glasshouse Arts, Entertainment and Conference Centre 3km
- Port Macquarie town centre 3.5km
- Lighthouse Beach (patrolled) 4.3km
- Port Macquarie Airport 7.3km
- Billabong Zoo 12.6km
- Timbertown Wauchope 23.6km
- Waitui Falls 65km
- Newcastle 246km

4WD tours, art markets, farmers' markets, beach camel rides, horse riding, whale watching/dolphin river cruises (seasonal).

Free onsite car parking available.

### SEASONALITY

2024	
1 Jan - 15 Mar	RED
16 Mar - 29 Mar	WHITE
30 Mar - 3 May	RED
4 May - 31 May	WHITE
1 Jun - 21 Jun	BLUE
22 Jun - 26 Jul	RED
27 Jul - 16 Aug	BLUE
17 Aug - 30 Aug	WHITE
31 Aug - 31 Dec	RED

2025	
1 Jan - 21 Mar	RED
22 Mar - 4 Apr	WHITE
5 Apr - 9 May	RED
10 May - 6 Jun	WHITE
7 Jun - 27 Jun	BLUE
28 Jun - 1 Aug	RED
2 Aug - 22 Aug	BLUE
23 Aug - 5 Sep	WHITE
6 Sep - 31 Dec	RED

### CREDIT CHARTS

Studio (Sleeps 2)				
Season	Nightly Rate (in Vacation Credits)			Weekly Total
	Mon-Thu	Fri-Sat	Sun	
BLUE	300	700	400	3000
WHITE	600	925	750	5000
RED	850	1250	1100	7000

1-Bedroom (Sleeps 4)				
Season	Nightly Rate (in Vacation Credits)			Weekly Total
	Mon-Thu	Fri-Sat	Sun	
BLUE	450	825	550	4000
WHITE	700	1125	950	6000
RED	1000	1450	1100	8000

1-Bedroom Deluxe (Sleeps 4)				
Season	Nightly Rate (in Vacation Credits)			Weekly Total
	Mon-Thu	Fri-Sat	Sun	
BLUE	750	1050	850	5950
WHITE	1000	1300	1100	7700
RED	1250	1650	1400	9700

2-Bedroom (Sleeps 6)				
Season	Nightly Rate (in Vacation Credits)			Weekly Total
	Mon-Thu	Fri-Sat	Sun	
BLUE	700	1125	950	6000
WHITE	1000	1450	1100	8000
RED	1250	1800	1400	10000

2-Bedroom Deluxe (Sleeps 6)				
Season	Nightly Rate (in Vacation Credits)			Weekly Total
	Mon-Thu	Fri-Sat	Sun	
BLUE	850	1250	1100	7000
WHITE	1100	1600	1400	9000
RED	1375	1950	1600	11000

2-Bedroom Deluxe Garden (Sleeps 6)				
Season	Nightly Rate (in Vacation Credits)			Weekly Total
	Mon-Thu	Fri-Sat	Sun	
BLUE	1150	1600	1350	9150
WHITE	1400	1900	1600	11000
RED	1650	2250	1900	13000

2-Bedroom Grand (Sleeps 6)				
Season	Nightly Rate (in Vacation Credits)			Weekly Total
	Mon-Thu	Fri-Sat	Sun	
BLUE	1250	1800	1400	10000
WHITE	1500	2100	1800	12000
RED	1750	2450	2100	14000

2-Bedroom Grand Garden (Sleeps 6)				
Season	Nightly Rate (in Vacation Credits)			Weekly Total
	Mon-Thu	Fri-Sat	Sun	
BLUE	1550	2100	1800	12200
WHITE	1800	2400	2050	14050
RED	1900	2600	2150	14950

3-Bedroom (Sleeps 8)				
Season	Nightly Rate (in Vacation Credits)			Weekly Total
	Mon-Thu	Fri-Sat	Sun	
BLUE	1000	1450	1100	8000
WHITE	1250	1800	1400	10000
RED	1500	2100	1800	12000

3-Bedroom Deluxe (Sleeps 8)				
Season	Nightly Rate (in Vacation Credits)			Weekly Total
	Mon-Thu	Fri-Sat	Sun	
BLUE	1100	1600	1400	9000
WHITE	1375	1950	1600	11000
RED	1625	2275	1950	13000

3-Bedroom Grand (Sleeps 8)				
Season	Nightly Rate (in Vacation Credits)			Weekly Total
	Mon-Thu	Fri-Sat	Sun	
BLUE	1300	2600	1600	12000
WHITE	1550	3050	1700	14000
RED	1750	3450	2100	16000

3-Bedroom Grand Garden (Sleeps 8)				
Season	Nightly Rate (in Vacation Credits)			Weekly Total
	Mon-Thu	Fri-Sat	Sun	
BLUE	1800	2450	2050	14150
WHITE	2100	2850	2400	16500
RED	2450	3300	2800	19200

3-Bedroom Presidential (Sleeps 6)				
Season	Nightly Rate (in Vacation Credits)			Weekly Total
	Mon-Thu	Fri-Sat	Sun	
BLUE	2200	2950	2500	17200
WHITE	3000	4050	3400	23500
RED	3500	4700	3950	27350

4-Bedroom Presidential (Sleeps 8)				
Season	Nightly Rate (in Vacation Credits)			Weekly Total
	Mon-Thu	Fri-Sat	Sun	
BLUE	2550	3450	2900	20000
WHITE	3350	4550	3800	26300
RED	4000	5450	4600	31500



# SHOAL BAY

## HUNTER REGION



### CLUB WYNDHAM SHOAL BAY

35-45 SHOAL BAY ROAD, SHOAL BAY, PORT STEPHENS, NSW, 2315, AUSTRALIA

Shoal Bay is a slice of paradise with white sandy shores, crystal-clear waters suited for water sports and a lush headland with beautiful panoramic views of Port Stephens and beyond. Positioned metres from the shoreline, Club Wyndham Shoal Bay puts you right in the middle of these natural drawcards.

#### LOCAL ATTRACTIONS (Distances are listed as an approximate indication only)

- Shoal Bay (unpatrolled) adjacent
- Box Beach (patrolled) 1.6km
- Tomaree Headland 1.7km
- Nelson Head Lighthouse 2.7km
- Nelson Bay Marina 3.3km
- Fingal Bay 3.5km
- Irukandji Shark & Ray Encounters 19.6km
- Sand Dune Adventures 34.2km
- Newcastle Airport (Williamtown) 36.8km
- Newcastle 63km
- Sydney 211km

Beach 4WD, horse riding, fishing (deep sea, reef and game), sailing, snorkelling, diving, dolphin watching, whale watching (seasonal).  
 Free onsite, undercover car parking available.



#### SEASONALITY

2024		2025	
1 Jan - 19 Jan	RED 1	1 Jan - 17 Jan	RED 1
20 Jan - 2 Feb	RED 2	18 Jan - 31 Jan	RED 2
3 Feb - 1 Mar	RED 4	1 Feb - 28 Feb	RED 4
2 Mar - 29 Mar	WHITE	1 Mar - 28 Mar	WHITE
30 Mar - 5 Apr	RED 1	29 Mar - 4 Apr	RED 3
6 Apr - 19 Apr	RED 2	5 Apr - 11 Apr	RED 2
20 Apr - 26 Apr	RED 3	12 Apr - 25 Apr	RED 1
27 Apr - 24 May	WHITE	26 Apr - 2 May	RED 2
25 May - 21 Jun	BLUE	3 May - 30 May	WHITE
22 Jun - 19 Jul	RED 3	31 May - 27 Jun	BLUE
20 Jul - 2 Aug	BLUE	28 Jun - 25 Jul	RED 3
3 Aug - 13 Sep	WHITE	26 Jul - 8 Aug	BLUE
14 Sep - 27 Sep	RED 2	9 Aug - 19 Sep	WHITE
28 Sep - 18 Oct	RED 3	20 Sep - 26 Sep	RED 3
19 Oct - 15 Nov	RED 4	27 Sep - 10 Oct	RED 2
16 Nov - 29 Nov	WHITE	11 Oct - 24 Oct	RED 3
30 Nov - 13 Dec	RED 3	25 Oct - 21 Nov	RED 4
14 Dec - 31 Dec	RED 1	22 Nov - 5 Dec	WHITE
		6 Dec - 19 Dec	RED 3
		20 Dec - 31 Dec	RED 1

#### CREDIT CHARTS

Studio (Sleeps 2)					1-Bedroom (Sleeps 4)					1-Bedroom Deluxe (Sleeps 4)				
Season	Nightly Rate (in Vacation Credits)			Weekly Total	Season	Nightly Rate (in Vacation Credits)			Weekly Total	Season	Nightly Rate (in Vacation Credits)			Weekly Total
	Mon-Thu	Fri-Sat	Sun			Mon-Thu	Fri-Sat	Sun			Mon-Thu	Fri-Sat	Sun	
BLUE	650	1300	1050	6250	BLUE	850	1750	1400	8300	BLUE	1000	2000	1600	9600
WHITE	850	1700	1350	8150	WHITE	1150	2250	1800	10900	WHITE	1300	2600	2100	12500
RED 4	900	1850	1450	8750	RED 4	1200	2450	1950	11650	RED 4	1400	2800	2250	13450
RED 3	1000	1950	1550	9450	RED 3	1300	2600	2100	12500	RED 3	1500	3000	2400	14400
RED 2	1050	2100	1700	10100	RED 2	1400	2800	2250	13450	RED 2	1600	3200	2550	15350
RED 1	1100	2250	1800	10700	RED 1	1500	2950	2400	14300	RED 1	1700	3400	2750	16350

1-Bedroom Grand (Sleeps 2)					2-Bedroom (Sleeps 6)					2-Bedroom Deluxe (Sleeps 6)				
Season	Nightly Rate (in Vacation Credits)			Weekly Total	Season	Nightly Rate (in Vacation Credits)			Weekly Total	Season	Nightly Rate (in Vacation Credits)			Weekly Total
	Mon-Thu	Fri-Sat	Sun			Mon-Thu	Fri-Sat	Sun			Mon-Thu	Fri-Sat	Sun	
BLUE	1200	2450	1950	11650	BLUE	1000	1950	1550	9450	BLUE	1200	2400	1950	11550
WHITE	1600	3200	2550	15350	WHITE	1250	2550	2050	12150	WHITE	1550	3150	2500	15000
RED 4	1700	3450	2750	16450	RED 4	1350	2750	2200	13100	RED 4	1700	3400	2700	16300
RED 3	1850	3650	2950	17650	RED 3	1450	2950	2350	14050	RED 3	1800	3600	2900	17300
RED 2	1950	3900	3150	18750	RED 2	1550	3150	2500	15000	RED 2	1950	3850	3100	18600
RED 1	2100	4150	3350	20050	RED 1	1650	3350	2650	15950	RED 1	2050	4100	3300	19700

2-Bedroom Deluxe (1 Bath) (Sleeps 4)					2-Bedroom Grand (Sleeps 4)					2-Bedroom Presidential (Sleeps 4)				
Season	Nightly Rate (in Vacation Credits)			Weekly Total	Season	Nightly Rate (in Vacation Credits)			Weekly Total	Season	Nightly Rate (in Vacation Credits)			Weekly Total
	Mon-Thu	Fri-Sat	Sun			Mon-Thu	Fri-Sat	Sun			Mon-Thu	Fri-Sat	Sun	
BLUE	1200	2400	1950	11550	BLUE	1450	2950	2350	14050	BLUE	1900	3850	3100	18400
WHITE	1550	3150	2500	15000	WHITE	1900	3800	3050	18250	WHITE	2500	5000	4000	24000
RED 4	1700	3400	2700	16300	RED 4	2050	4100	3300	19700	RED 4	2700	5400	4300	25900
RED 3	1800	3600	2900	17300	RED 3	2200	4400	3500	21100	RED 3	2900	5750	4600	27700
RED 2	1950	3850	3100	18600	RED 2	2350	4700	3750	22550	RED 2	3100	6150	4900	29600
RED 1	2050	4100	3300	19700	RED 1	2500	5000	4000	24000	RED 1	3250	6550	5250	31350

3-Bedroom (Sleeps 6)				
BLUE	1150	2250	1800	10900
WHITE	1450	2950	2350	14050
RED 4	1600	3150	2550	15250
RED 3	1700	3400	2700	16300
RED 2	1800	3600	2900	17300
RED 1	1900	3850	3050	18350

For more resort details, visit [discoverybywyndham.com](https://discoverybywyndham.com)  
 See pages 42-43 for resort facilities.



# SYDNEY

## CITY



## CLUB WYNDHAM SYDNEY

CNR WENTWORTH AVENUE AND GOULBURN STREET, SYDNEY, NSW, 2000, AUSTRALIA



1-bedroom Deluxe

2-bedroom Presidential

Club Wyndham Sydney

Home to world-famous landmarks like the Sydney Opera House and the Harbour Bridge, the vibrant city of Sydney will surely fill your itinerary regardless of the length of your stay.

The stylish, modern Club Wyndham Sydney is within easy walking distance of many major attractions and just a short stroll from Hyde Park, Oxford Street, and the famous restaurant precincts of Darling Harbour and Chinatown. A few blocks from the hotel, visit the famous Australian Museum to see its latest exhibits. When travelling with kids, spend a day at Taronga Zoo and see native and exotic animals.

### LOCAL ATTRACTIONS (Distances are listed as an approximate indication only)

- Oxford Street 300m
- Chinatown 1km
- Darling Harbour 1.5km
- International Convention Centre Sydney 1.6km
- SEA LIFE Sydney Aquarium 1.7km
- Sydney Opera House 2.4km
- BridgeClimb Sydney 3.1km
- Harbour Bridge 3.4km
- Sydney Airport (international) 6.3km
- Bondi Beach 7.5km
- Taronga Zoo 10.8km
- Blue Mountains 129km

Shopping, dining, harbour cruises.

Limited onsite and undercover car parking available (charges apply).

### SEASONALITY

2024	
1 Jan - 31 Dec	RED

2025	
1 Jan - 31 Dec	RED

Blackout Dates 2024	
1 Jan - 4 Jan	
27 Feb - 8 Mar	
30 Mar - 19 Apr	
22 Jun - 12 Jul	
14 Sep - 4 Oct	
14 Dec - 31 Dec	

Blackout Dates 2025	
1 Jan - 4 Jan	
27 Feb - 8 Mar	
5 Apr - 25 Apr	
28 Jun - 18 Jul	
20 Sep - 10 Oct	
20 Dec - 31 Dec	

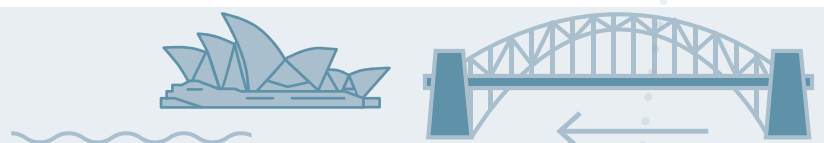
The following additional rules apply to reservations made more than 9 months in advance at Club Wyndham Sydney:

Blackout Dates (listed in the table above)	Minimum 7 consecutive night stay applies which can be split between resorts, subject to weekend stay restrictions. Reservations for Blackout Dates cannot be made online and must be made by calling Owner Services.
All other dates	Minimum 3 consecutive night stay applies

Parking is limited and incurs an additional charge, which is subject to price fluctuation.

### CREDIT CHARTS

Studio (Sleeps 2)					Studio Deluxe (Sleeps 2)				
Season	Nightly Rate (in Vacation Credits)			Weekly Total	Season	Nightly Rate (in Vacation Credits)			Weekly Total
	Mon-Thu	Fri-Sat	Sun			Mon-Thu	Fri-Sat	Sun	
RED	1100	1600	1400	9000	RED	1375	1950	1600	11000
Studio Upper Deluxe (Sleeps 2)					Studio Sky (Sleeps 2)				
RED	1500	2100	1800	12000	RED	2470	3230	2660	19000
1-Bedroom (Sleeps 4)					1-Bedroom Plus (Sleeps 2)				
RED	1500	2100	1800	12000	RED	1625	2275	1950	13000
1-Bedroom Deluxe (Sleeps 4)					2-Bedroom (Sleeps 6)				
RED	1750	2450	2100	14000	RED	1750	2450	2100	14000
1-Bedroom Upper Deluxe (Sleeps 4)					1-Bedroom Sky (Sleeps 4)				
RED	1900	2600	2200	15000	RED	2730	3570	2940	21000
2-Bedroom Deluxe (Sleeps 6)					2-Bedroom Upper Deluxe (Sleeps 6)				
RED	2000	2750	2500	16000	RED	2250	3125	2750	18000
2-Bedroom Sky (Sleeps 6)					2-Bedroom Presidential (Sleeps 4)				
RED	3770	4930	4060	29000	RED	3770	4930	4060	29000



# DINNER PLAIN

## ALPINE REGION



## CLUB WYNDHAM DINNER PLAIN, MT HOTHAM

12 BIG MUSTER DRIVE, DINNER PLAIN, 3898, VICTORIA

Whether you explore the wilderness in summer or witness the snowy wonderland during winter, Victoria's alpine high country is breathtaking all year around.

Situated just metres from the Great Alpine Road, Club Wyndham Dinner Plain is only fifteen minutes from Mt Hotham's renowned ski runs and hiking trails. Explore the magnificent country trails on foot, mountain bike during summer, or enjoy a sled ride pulled by a pack of huskies during winter. Try your hand at Frisbee Golf within Dinner Plain, or go for an adventure on one of the many hiking tracks, ranging from everyday walking to full-day hikes across the mountain tops.

Club Wyndham Dinner Plain offers lodge accommodation and two, three, and four-bedroom fully furnished chalets, all featuring the stone and wood finishes and pitched corrugated iron roofs of traditional high-country cattlemen's huts.

### LOCAL ATTRACTIONS (Distances are listed as an approximate indication only)

- Dinner Plain Tube Park 800m
- Great Alpine Road 3.8km
- Mt Hotham Airport 12km
- Mt Hotham 13.2km
- Razorback North Walking Track 28.7km
- Melbourne 391km

Snowsports (seasonal), frisbee golf, mountain biking, hiking, and husky sled dog tours (seasonal)

Free onsite car parking available

#### PLEASE NOTE:

Either the picturesque country town of Bright or Omeo will be your last stop for groceries and petrol before making your ascent up the mountain. Please note that there are NO grocery stores or petrol stations available at Mt Hotham or Dinner Plain. Snow chains are compulsory in snowy conditions.



2-bedroom Grand



1-bedroom Deluxe



Club Wyndham Dinner Plain, Mt Hotham

### SEASONALITY

2024	
1 Jan - 12 Jan	RED 2
13 Jan - 23 Feb	WHITE
24 Feb - 8 Mar	BLUE
9 Mar - 26 Apr	WHITE
27 Apr - 17 May	BLUE
18 May - 14 Jun	WHITE
15 Jun - 21 Jun	RED 2
22 Jun - 30 Aug	RED 1
31 Aug - 11 Oct	RED 2
12 Oct - 13 Dec	WHITE
14 Dec - 20 Dec	BLUE
21 Dec - 31 Dec	RED 2

2025	
1 Jan - 17 Jan	RED 2
18 Jan - 20 Jun	WHITE
21 Jun - 27 Jun	RED 2
28 Jun - 5 Sep	RED 1
6 Sep - 17 Oct	RED 2
18 Oct - 14 Nov	WHITE
15 Nov - 26 Dec	BLUE
27 Dec - 31 Dec	RED 2

### CREDIT CHARTS

Hotel Room (Sleeps 2)					1-Bedroom (Sleeps 4)					1-Bedroom Deluxe (Sleeps 2 or 4)				
Season	Nightly Rate (in Vacation Credits)			Weekly Total	Season	Nightly Rate (in Vacation Credits)			Weekly Total	Season	Nightly Rate (in Vacation Credits)			Weekly Total
	Mon-Thu	Fri-Sat	Sun			Mon-Thu	Fri-Sat	Sun			Mon-Thu	Fri-Sat	Sun	
BLUE	500	950	550	4450	BLUE	750	1350	800	6500	BLUE	950	1750	1050	8350
WHITE	650	1150	700	5600	WHITE	900	1650	1000	7900	WHITE	1150	2150	1300	10200
RED 2	1000	1800	1050	8650	RED 2	1400	2500	1500	12100	RED 2	1800	3300	2000	15800
RED 1	1150	2100	1250	10050	RED 1	1650	2950	1800	14300	RED 1	2150	3850	2300	18600

2-Bedroom Deluxe (Sleeps 4)					2-Bedroom Grand (Sleeps 4)					3-Bedroom Deluxe (Sleeps 6)				
Season	Nightly Rate (in Vacation Credits)			Weekly Total	Season	Nightly Rate (in Vacation Credits)			Weekly Total	Season	Nightly Rate (in Vacation Credits)			Weekly Total
	Mon-Thu	Fri-Sat	Sun			Mon-Thu	Fri-Sat	Sun			Mon-Thu	Fri-Sat	Sun	
BLUE	1150	2100	1250	10050	BLUE	1250	2300	1350	10950	BLUE	1600	2900	1750	13950
WHITE	1400	2550	1550	12250	WHITE	1550	2800	1650	13450	WHITE	1950	3550	2150	17050
RED 2	2150	3950	2350	18850	RED 2	2350	4300	2600	20600	RED 2	3000	5500	3300	26300
RED 1	2550	4650	2800	22300	RED 1	2800	5050	3050	24350	RED 1	3550	6450	3850	30950

3-Bedroom Grand (Sleeps 6)					4-Bedroom Deluxe (Sleeps 8)					4-Bedroom Grand (Sleeps 8)				
Season	Nightly Rate (in Vacation Credits)			Weekly Total	Season	Nightly Rate (in Vacation Credits)			Weekly Total	Season	Nightly Rate (in Vacation Credits)			Weekly Total
	Mon-Thu	Fri-Sat	Sun			Mon-Thu	Fri-Sat	Sun			Mon-Thu	Fri-Sat	Sun	
BLUE	1800	3300	2000	15800	BLUE	1950	3550	2100	17000	BLUE	2050	3750	2250	17950
WHITE	2200	4050	2400	19300	WHITE	2400	4300	2600	20800	WHITE	2550	4600	2750	22150
RED 2	3450	6250	3750	30050	RED 2	3650	6700	4000	32000	RED 2	3900	7100	4250	34050
RED 1	4050	7350	4400	35300	RED 1	4300	7850	4700	37600	RED 1	4600	8400	5050	40250

Most apartments have external stairs and many have internal stairs which may not be suitable for those with mobility issues. Please contact Owner Services for details.



# MELBOURNE CITY



## CLUB WYNDHAM MELBOURNE

199 WILLIAM STREET, MELBOURNE VIC, 3000, AUSTRALIA



One of Australia's world-class cities, Melbourne is a mixed playground of high culture, fine dining and coffee, diverse shopping, and showpiece sporting events.

Club Wyndham Melbourne offers stylish and sophisticated apartment-style accommodation close to the city's hottest attractions. The hotel's facilities are sure to impress, with a 24-hour reception, rooftop heated swimming pool and barbecue area, library, gym, and ground-floor retail and dining precinct.

Take a short stroll to Federation Square and immerse yourself in this thriving city's culture. Catch a world-famous show at one of the nearby theatres and indulge yourself in Melbourne's best cafes, restaurants, and bars. Or check out the latest exhibit at the National Gallery of Victoria and Melbourne Museum.

### LOCAL ATTRACTIONS (Distances are listed as an approximate indication only)

- Bourke Street Mall 700m
- Queen Victoria Market 800m
- Docklands Stadium 1km
- Crown Casino 1.4km
- Federation Square 1.4km
- MCG 3km
- Melbourne Zoo 3.6km
- Melbourne Airport (Tullamarine) 21km
- St Kilda Beach 7.8km

Shopping, dining, nightlife, football.

Limited nearby and undercover car parking available (charges apply).

### SEASONALITY

2024		2025	
1 Jan - 26 Jan	RED 1	1 Jan - 31 Jan	RED 1
27 Jan - 2 Feb	RED 2	1 Feb - 4 Apr	RED 2
3 Feb - 9 Feb	WHITE	5 Apr - 25 Apr	RED 1
10 Feb - 29 Mar	RED 2	26 Apr - 2 May	RED 2
30 Mar - 12 Apr	RED 1	3 May - 30 May	WHITE
13 Apr - 3 May	RED 2	31 May - 13 Jun	BLUE
4 May - 24 May	WHITE	14 Jun - 27 Jun	WHITE
25 May - 7 Jun	BLUE	28 Jun - 25 Jul	RED 2
8 Jun - 21 Jun	WHITE	26 Jul - 1 Aug	BLUE
22 Jun - 19 Jul	RED 2	2 Aug - 19 Sep	WHITE
20 Jul - 26 Jul	BLUE	20 Sep - 26 Sep	RED 2
27 Jul - 13 Sep	WHITE	27 Sep - 3 Oct	RED 1
14 Sep - 20 Sep	RED 2	4 Oct - 31 Oct	RED 2
21 Sep - 4 Oct	RED 1	1 Nov - 7 Nov	RED 1
5 Oct - 1 Nov	RED 2	8 Nov - 19 Dec	RED 2
2 Nov - 8 Nov	RED 1	20 Dec - 31 Dec	RED 1
9 Nov - 13 Dec	RED 2		
14 Dec - 31 Dec	RED 1		

### CREDIT CHARTS

Studio Deluxe (Sleeps 2)					1-Bedroom (Sleeps 4)					1-Bedroom Deluxe (Sleeps 4)				
Season	Nightly Rate (in Vacation Credits)			Weekly Total	Season	Nightly Rate (in Vacation Credits)			Weekly Total	Season	Nightly Rate (in Vacation Credits)			Weekly Total
	Mon-Thu	Fri-Sat	Sun			Mon-Thu	Fri-Sat	Sun			Mon-Thu	Fri-Sat	Sun	
BLUE	1050	1300	1150	7950	BLUE	1200	1550	1350	9250	BLUE	1300	1650	1450	9950
WHITE	1250	1600	1400	9600	WHITE	1450	1850	1600	11100	WHITE	1550	1950	1700	11800
RED 2	1550	2000	1750	11950	RED 2	1800	2300	2000	13800	RED 2	1900	2450	2150	14650
RED 1	2150	2800	2450	16650	RED 1	2500	3200	2800	19200	RED 1	2700	3450	3000	20700

2-Bedroom 1-Bath Deluxe (Sleeps 4 or 6)					2-Bedroom 2-Bath Deluxe (Sleeps 4 or 6)					3-Bedroom Grand (Sleeps 6)				
Season	Nightly Rate (in Vacation Credits)			Weekly Total	Season	Nightly Rate (in Vacation Credits)			Weekly Total	Season	Nightly Rate (in Vacation Credits)			Weekly Total
	Mon-Thu	Fri-Sat	Sun			Mon-Thu	Fri-Sat	Sun			Mon-Thu	Fri-Sat	Sun	
BLUE	1400	1800	1550	10750	BLUE	1450	1900	1650	11250	BLUE	2200	2850	2500	17000
WHITE	1650	2150	1850	12750	WHITE	1750	2250	1950	13450	WHITE	2650	3400	3000	20400
RED 2	2100	2650	2350	16050	RED 2	2200	2800	2450	16850	RED 2	3350	4250	3750	25650
RED 1	2900	3750	3250	22350	RED 1	3100	3950	3450	23750	RED 1	4650	5950	5200	35700

3-Bedroom Presidential (Sleeps 6)				
Season	Nightly Rate (in Vacation Credits)			Weekly Total
	Mon-Thu	Fri-Sat	Sun	
BLUE	2650	3400	3000	20400
WHITE	3200	4100	3600	24600
RED 2	4000	5100	4500	30700
RED 1	5600	7150	6250	42950

Parking is limited and incurs an additional charge, which is subject to price fluctuation.



For more resort details, visit [discoverybywyndham.com](https://discoverybywyndham.com)  
See pages 42-43 for resort facilities.

# BALLARAT

## CENTRAL HIGHLANDS



### CLUB WYNDHAM BALLARAT

220 GRANT STREET, SEBASTOPOL, VIC, 3356, AUSTRALIA

This quiet country retreat will make you feel as if you have stepped off the pages of a novel. A heritage listed bluestone manor set on manicured lakefront grounds, Club Wyndham Ballarat blends the glory of historic architecture with the opulence of modern facilities. Enjoy the resort's spa, sauna, swimming pool and games room, or just relax in front of the fireplace.



1-bedroom



2-bedroom



Club Wyndham Ballarat

### LOCAL ATTRACTIONS (Distances are listed as an approximate indication only)

- Ballarat town centre 6.3km
- Sovereign Hill 8.2km
- Eureka Stockade 9.8km
- Daylesford spa region 50km
- Great Ocean Road 110km
- Melbourne Airport (Tullamarine) 118km
- Melbourne 121km

Art galleries, bushwalking, day spas

Free onsite car parking available. Caravan and camper parking also available.

### SEASONALITY

2024	
1 Jan - 26 Jan	RED
27 Jan - 29 Mar	WHITE
30 Mar - 26 Apr	RED
27 Apr - 24 May	WHITE
25 May - 21 Jun	BLUE
22 Jun - 19 Jul	RED
20 Jul - 30 Aug	BLUE
31 Aug - 13 Sep	WHITE
14 Sep - 15 Nov	RED
16 Nov - 6 Dec	WHITE
7 Dec - 31 Dec	RED

2025	
1 Jan - 31 Jan	RED
1 Feb - 4 Apr	WHITE
5 Apr - 2 May	RED
3 May - 30 May	WHITE
31 May - 27 Jun	BLUE
28 Jun - 25 Jul	RED
26 Jul - 5 Sep	BLUE
6 Sep - 19 Sep	WHITE
20 Sep - 21 Nov	RED
22 Nov - 12 Dec	WHITE
13 Dec - 31 Dec	RED

### CREDIT CHARTS

Studio (Sleeps 2)					Studio Deluxe or Studio Plus (Sleeps 2)					1-Bedroom (Sleeps 4)				
Season	Nightly Rate (in Vacation Credits)			Weekly Total	Season	Nightly Rate (in Vacation Credits)			Weekly Total	Season	Nightly Rate (in Vacation Credits)			Weekly Total
	Mon-Thu	Fri-Sat	Sun			Mon-Thu	Fri-Sat	Sun			Mon-Thu	Fri-Sat	Sun	
BLUE	300	700	400	3000	BLUE	350	825	450	3500	BLUE	450	825	550	4000
WHITE	600	925	750	5000	WHITE	650	1050	800	5500	WHITE	700	1125	950	6000
RED	850	1250	1100	7000	RED	900	1375	1150	7500	RED	1000	1450	1100	8000

1-Bedroom Deluxe (Sleeps 4)					2-Bedroom (Sleeps 6)					2-Bedroom Deluxe (Sleeps 6)				
Season	Nightly Rate (in Vacation Credits)			Weekly Total	Season	Nightly Rate (in Vacation Credits)			Weekly Total	Season	Nightly Rate (in Vacation Credits)			Weekly Total
	Mon-Thu	Fri-Sat	Sun			Mon-Thu	Fri-Sat	Sun			Mon-Thu	Fri-Sat	Sun	
BLUE	600	925	750	5000	BLUE	700	1125	950	6000	BLUE	850	1250	1100	7000
WHITE	850	1250	1100	7000	WHITE	1000	1450	1100	8000	WHITE	1100	1600	1400	9000
RED	1100	1600	1400	9000	RED	1250	1800	1400	10000	RED	1375	1950	1600	11000

3-Bedroom (Sleeps 8)					3-Bedroom Deluxe (Sleeps 8)				
Season	Nightly Rate (in Vacation Credits)			Weekly Total	Season	Nightly Rate (in Vacation Credits)			Weekly Total
	Mon-Thu	Fri-Sat	Sun			Mon-Thu	Fri-Sat	Sun	
BLUE	1000	1450	1100	8000	BLUE	1100	1600	1400	9000
WHITE	1250	1800	1400	10000	WHITE	1375	1950	1600	11000
RED	1500	2100	1800	12000	RED	1625	2275	1950	13000

This resort is a two-storey building with no elevator access. If you require a ground floor apartment, please ensure you book the room type located on the ground floor.



# TORQUAY

## SURF COAST



## CLUB WYNDHAM TORQUAY

100 THE ESPLANADE, TORQUAY, VIC, 3228, AUSTRALIA



Torquay is one of the most prominent dots on Australia's surfing map, but it gives visitors much more than perfect, pumping waves. At the starting line of the Great Ocean Road and with panoramic views of Victoria's breathtaking Surf Coast, Torquay could be the beginning of an incredible road trip or a complete holiday itself. Club Wyndham Torquay puts you near all these attractions and offers facilities that will make you want to extend your stay, including an indoor pool, outdoor pool and tennis court.

### LOCAL ATTRACTIONS (Distances are listed as an approximate indication only)

- Torquay Beach (patrolled) 1.2km
- Australian National Surfing Museum 1.5km
- Tiger Moth World 6.1km
- Bells Beach 8.8km
- Surf Coast Walk 10.3km
- Great Ocean Rd Chocolaterie & Ice 14.6km
- Geelong 21.6km
- Melbourne CBD 105km
- Ballarat 110km
- Melbourne Airport (Tullamarine) 112km
- Twelve Apostles 150km

Torquay village retail and café precinct, Great Ocean Road, Surf City factory outlets.

Limited undercover parking is available with a 2.05m height restriction, allocated on a 'first come, first served' basis. Additional parking also available across the road at the beach car park, which can accommodate larger vehicles, such as caravans and trailers, as well as free on street parking nearby.

### SEASONALITY

2024		2025	
1 Jan - 12 Jan	RED 1	1 Jan - 17 Jan	RED 1
13 Jan - 26 Jan	RED 2	18 Jan - 31 Jan	RED 2
27 Jan - 2 Feb	RED 3	1 Feb - 7 Feb	RED 3
3 Feb - 29 Mar	RED 4	8 Feb - 4 Apr	RED 4
30 Mar - 12 Apr	RED 2	5 Apr - 11 Apr	RED 3
13 Apr - 26 Apr	RED 3	12 Apr - 25 Apr	RED 2
27 Apr - 10 May	WHITE	26 Apr - 2 May	RED 3
11 May - 21 Jun	BLUE	3 May - 16 May	WHITE
22 Jun - 19 Jul	RED 3	17 May - 27 Jun	BLUE
20 Jul - 9 Aug	BLUE	28 Jun - 25 Jul	RED 3
10 Aug - 13 Sep	WHITE	26 Jul - 15 Aug	BLUE
14 Sep - 11 Oct	RED 3	16 Aug - 19 Sep	WHITE
12 Oct - 25 Oct	WHITE	20 Sep - 17 Oct	RED 3
26 Oct - 29 Nov	RED 4	18 Oct - 31 Oct	WHITE
30 Nov - 13 Dec	RED 3	1 Nov - 5 Dec	RED 4
14 Dec - 31 Dec	RED 1	6 Dec - 19 Dec	RED 3
		20 Dec - 31 Dec	RED 1

### CREDIT CHARTS

Hotel Room - Limited Outlook						Hotel Room (Sleeps 2)					Studio Deluxe (Sleeps 2)						
Season	Nightly Rate (in Vacation Credits)				Weekly Total	Season	Nightly Rate (in Vacation Credits)				Weekly Total	Season	Nightly Rate (in Vacation Credits)				Weekly Total
	Mon-Thu	Fri-Sat	Sun				Mon-Thu	Fri-Sat	Sun				Mon-Thu	Fri-Sat	Sun		
BLUE	400	800	600		3800	BLUE	450	950	700	4400	BLUE	650	1350	1000	6300		
WHITE	450	950	700		4400	WHITE	550	1150	850	5350	WHITE	750	1600	1200	7400		
RED 4	550	1100	850		5250	RED 4	650	1350	1000	6300	RED 4	900	1900	1400	8800		
RED 3	700	1400	1050		6650	RED 3	800	1700	1250	7850	RED 3	1150	2400	1800	11200		
RED 2	900	1850	1400		8700	RED 2	1050	2200	1650	10250	RED 2	1500	3150	2350	14650		
RED 1	1150	2400	1800		11200	RED 1	1350	2900	2150	13350	RED 1	1950	4100	3050	19050		

1-Bedroom (Sleeps 4)					2-Bedroom - Limited Outlook (Sleeps 6)					2-Bedroom (Sleeps 6)							
Season	Nightly Rate (in Vacation Credits)				Weekly Total	Season	Nightly Rate (in Vacation Credits)				Weekly Total	Season	Nightly Rate (in Vacation Credits)				Weekly Total
	Mon-Thu	Fri-Sat	Sun				Mon-Thu	Fri-Sat	Sun				Mon-Thu	Fri-Sat	Sun		
BLUE	800	1650	1200		7700	BLUE	950	1950	1450	9150	BLUE	1100	2350	1750	10850		
WHITE	900	1950	1450		8950	WHITE	1100	2350	1750	10850	WHITE	1350	2800	2100	13100		
RED 4	1100	2300	1700		10700	RED 4	1300	2750	2050	12750	RED 4	1600	3300	2500	15500		
RED 3	1350	2900	2150		13350	RED 3	1650	3500	2600	16200	RED 3	2000	4150	3100	19400		
RED 2	1800	3750	2800		17500	RED 2	2150	4550	3400	21100	RED 2	2600	5450	4100	25400		
RED 1	2350	4900	3650		22850	RED 1	2800	5950	4450	27550	RED 1	3400	7100	5350	33150		

2-Bedroom Deluxe (Sleeps 6)					
Season	Nightly Rate (in Vacation Credits)				Weekly Total
	Mon-Thu	Fri-Sat	Sun		
BLUE	1400	2900	2200		13600
WHITE	1700	3500	2650		16450
RED 4	1950	4150	3100		19200
RED 3	2500	5200	3900		24300
RED 2	3250	6850	5100		31800
RED 1	3600	7500	5650		35050



# PHILLIP ISLAND

## GIPPSLAND

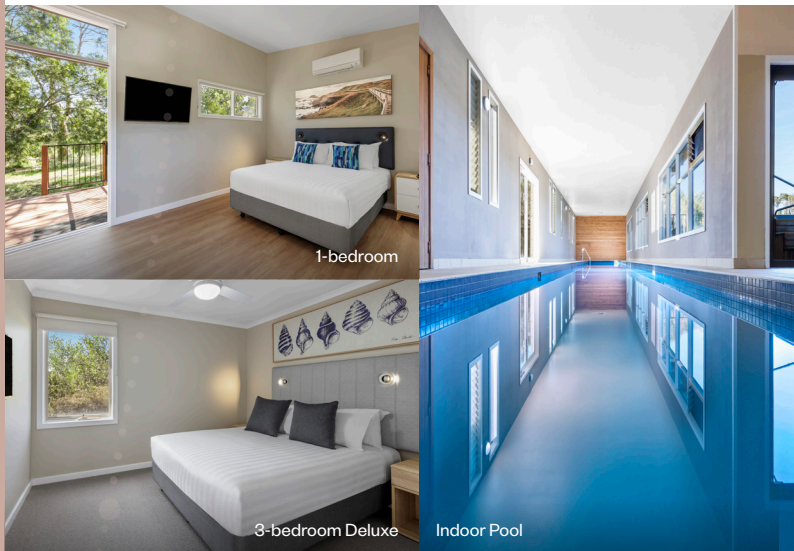


### CLUB WYNDHAM PHILLIP ISLAND

2128 PHILLIP ISLAND ROAD, COWES, PHILLIP ISLAND, VIC, 3922, AUSTRALIA

Phillip Island is Victoria's holiday sweet spot, a fantastic destination just over 2 hour's drive from Melbourne. Located just off Australia's southern coast, Phillip Island offers wildlife experiences, idyllic beaches, captivating coastlines, family fun activities, and world-class events.

Club Wyndham Phillip Island, surrounded by natural bushland, boasts an array of superb facilities, including a restaurant and bar, outdoor swimming pool, a fully equipped gym and spa, two tennis courts, and picnic barbecue areas. For those who like to stay active and explore the surroundings, there are seven kilometres of walking and cycling tracks around the resort.



1-bedroom

3-bedroom Deluxe

Indoor Pool

### LOCAL ATTRACTIONS (Distances are listed as an approximate indication only)

- Cowes Town Centre 2.2km
- A Maze'N'Things 3.5km
- Phillip Island Grand Prix Circuit 4km
- Phillip Island Winery 6.8km
- Phillip Island Nature Park 11km
- Summerlands Lookout 12km
- Phillip Island Chocolate Factory 12km
- Penguin Parade 13km
- Nobbies Centre (Antarctic Journey) 14.3km
- Melbourne Airport 162km

Shopping, dining, motor sports, fishing and boating, wild animal encounters.

Free onsite car parking available

### SEASONALITY

2024		2025	
1 Jan - 5 Jan	RED 1	1 Jan - 10 Jan	RED 1
6 Jan - 26 Jan	RED 2	11 Jan - 24 Jan	RED 2
27 Jan - 16 Feb	RED 3	25 Jan - 14 Feb	RED 3
17 Feb - 15 Mar	RED 4	15 Feb - 21 Feb	RED 4
16 Mar - 29 Mar	WHITE	22 Feb - 28 Feb	RED 2
30 Mar - 5 Apr	RED 2	1 Mar - 4 Apr	RED 4
6 Apr - 26 Apr	RED 3	5 Apr - 2 May	RED 3
27 Apr - 7 Jun	WHITE	3 May - 13 Jun	WHITE
8 Jun - 21 Jun	BLUE	14 Jun - 27 Jun	BLUE
22 Jun - 19 Jul	RED 4	28 Jun - 25 Jul	RED 4
20 Jul - 13 Sep	BLUE	26 Jul - 19 Sep	BLUE
14 Sep - 11 Oct	RED 4	20 Sep - 3 Oct	RED 3
12 Oct - 18 Oct	RED 1	4 Oct - 17 Oct	RED 4
19 Oct - 25 Oct	RED 3	18 Oct - 24 Oct	RED 1
26 Oct - 1 Nov	WHITE	25 Oct - 31 Oct	WHITE
2 Nov - 8 Nov	RED 3	1 Nov - 7 Nov	RED 2
9 Nov - 6 Dec	WHITE	8 Nov - 19 Dec	WHITE
7 Dec - 13 Dec	RED 4	20 Dec - 26 Dec	RED 4
14 Dec - 20 Dec	RED 3	27 Dec - 31 Dec	RED 1
21 Dec - 31 Dec	RED 1		

All apartments (except special needs rooms) have external stairs and may not be suitable for those with mobility issues.

### CREDIT CHARTS

Studio (Sleeps 2)					2-Bedroom (Sleeps 4)				
Season	Nightly Rate (in Vacation Credits)			Weekly Total	Season	Nightly Rate (in Vacation Credits)			Weekly Total
	Mon-Thu	Fri-Sat	Sun			Mon-Thu	Fri-Sat	Sun	
BLUE	250	550	400	2500	BLUE	450	850	700	4200
WHITE	450	900	700	4300	WHITE	700	1400	1100	6700
RED 4	650	1250	1000	6100	RED 4	1000	1950	1600	9500
RED 3	700	1400	1100	6700	RED 3	1100	2250	1800	10700
RED 2	800	1650	1300	7800	RED 2	1300	2550	2000	12300
RED 1	950	1850	1500	9000	RED 1	1450	2900	2300	13900

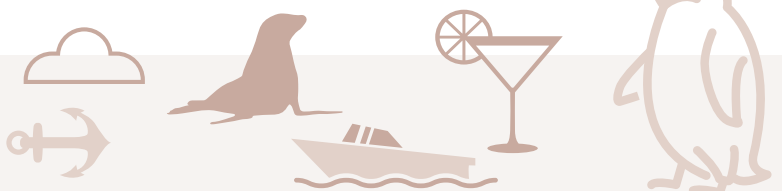
  

2-Bedroom Deluxe (Sleeps 4)					3-Bedroom (Sleeps 6)				
Season	Nightly Rate (in Vacation Credits)			Weekly Total	Season	Nightly Rate (in Vacation Credits)			Weekly Total
	Mon-Thu	Fri-Sat	Sun			Mon-Thu	Fri-Sat	Sun	
BLUE	600	800	650	4650	BLUE	550	1050	800	5100
WHITE	1050	1450	1200	8300	WHITE	850	1700	1300	8100
RED 4	1250	1650	1400	9700	RED 4	1200	2400	1900	11500
RED 3	1350	1850	1550	10650	RED 3	1350	2750	2200	13100
RED 2	1650	2250	1900	13000	RED 2	1600	3150	2550	16250
RED 1	2000	2700	2300	15700	RED 1	1800	3550	2800	17100

3-Bedroom Deluxe (Sleeps 6)					3-Bedroom Grand (Sleeps 6)				
Season	Nightly Rate (in Vacation Credits)			Weekly Total	Season	Nightly Rate (in Vacation Credits)			Weekly Total
	Mon-Thu	Fri-Sat	Sun			Mon-Thu	Fri-Sat	Sun	
BLUE	850	1150	950	6650	BLUE	1050	1400	1200	8200
WHITE	1500	2050	1750	11850	WHITE	1850	2500	2100	14500
RED 4	1750	2400	2050	13850	RED 4	2150	2950	2450	16950
RED 3	1950	2650	2200	15300	RED 3	2350	3200	2700	18500
RED 2	2350	3200	2700	18500	RED 2	2900	3900	3300	22700
RED 1	2850	3900	3300	22500	RED 1	3500	4750	4000	27500

For more resort details, visit [discoverybywyndham.com](https://discoverybywyndham.com)  
See pages 42-43 for resort facilities.





# SEVEN MILE BEACH

HOBART



## CLUB WYNDHAM SEVEN MILE BEACH

78 SURF ROAD, SEVEN MILE BEACH, TAS, 7170, AUSTRALIA



1-bedroom Deluxe



2-bedroom Presidential



Hobby farm

Seven Mile Beach is the perfect family holiday destination for discovering Tasmania's wilderness and enjoying Hobart's maritime charm with a diverse offering of activities and attractions.

Set in a prime beachfront location, Club Wyndham Seven Mile Beach offers the best of a relaxing beach holiday with the convenience of being only a 20-minute drive from Tasmania's capital city, Hobart. The resort provides owners with superb family-friendly resort facilities. There is a restaurant and bar, heated outdoor pool, spa, tennis court, barbecue area, and gym. One unique feature is the resort's hobby farm, where owners and their families can interact with alpacas, miniature goats, cows and chickens.

### LOCAL ATTRACTIONS (Distances are listed as an approximate indication only)

- Seven Mile Beach 200m
- Hobart International Airport 3km
- Sorell town centre 14.4km
- Hobart 20.5km
- Museum of Old and New Art (MONA) 32km
- Mount Wellington 40.5km
- Port Arthur Historic Site 83km
- Lark Distillery 20.4km
- Richmond Town Centre 20.3km

Golf (18-hole courses), vineyard trail  
 Free onsite car parking available. Caravan and camper parking also available.

### SEASONALITY

2024		2025	
1 Jan - 26 Jan	RED 1	1 Jan - 31 Jan	RED 1
27 Jan - 9 Feb	RED 3	1 Feb - 14 Feb	RED 3
10 Feb - 29 Mar	RED 2	15 Feb - 18 Apr	RED 2
30 Mar - 5 Apr	RED 1	19 Apr - 25 Apr	RED 1
6 Apr - 26 Apr	RED 2	26 Apr - 2 May	RED 2
27 Apr - 10 May	WHITE	3 May - 16 May	WHITE
11 May - 24 May	BLUE	17 May - 30 May	BLUE
25 May - 21 Jun	WHITE	31 May - 27 Jun	WHITE
22 Jun - 19 Jul	RED 2	28 Jun - 25 Jul	RED 2
20 Jul - 9 Aug	WHITE	26 Jul - 15 Aug	WHITE
10 Aug - 23 Aug	BLUE	16 Aug - 29 Aug	BLUE
24 Aug - 13 Sep	WHITE	30 Aug - 19 Sep	WHITE
14 Sep - 11 Oct	RED 2	20 Sep - 17 Oct	RED 2
12 Oct - 18 Oct	RED 3	18 Oct - 24 Oct	RED 3
19 Oct - 1 Nov	WHITE	25 Oct - 7 Nov	WHITE
2 Nov - 6 Dec	RED 3	8 Nov - 12 Dec	RED 3
7 Dec - 31 Dec	RED 1	13 Dec - 31 Dec	RED 1

### CREDIT CHARTS

1-Bedroom (Sleeps 4)					1-Bedroom Deluxe (Sleeps 4)					2-Bedroom (Sleeps 6)				
Season	Nightly Rate (in Vacation Credits)			Weekly Total	Season	Nightly Rate (in Vacation Credits)			Weekly Total	Season	Nightly Rate (in Vacation Credits)			Weekly Total
	Mon-Thu	Fri-Sat	Sun			Mon-Thu	Fri-Sat	Sun			Mon-Thu	Fri-Sat	Sun	
BLUE	150	350	250	1550	BLUE	200	400	300	1900	BLUE	255	500	347	2367
WHITE	300	650	500	3000	WHITE	350	700	500	3300	WHITE	400	800	600	3800
RED 3	600	1250	900	5800	RED 3	650	1400	1000	6400	RED 3	700	1450	1100	6800
RED 2	950	2000	1500	9300	RED 2	1100	2200	1650	10450	RED 2	1150	2350	1750	11050
RED 1	1400	2900	2150	13550	RED 1	1550	3250	2450	15150	RED 1	1650	3450	2550	16050

2-Bedroom Deluxe (Sleeps 6)					3-Bedroom (Sleeps 8)					2-Bedroom Grand (Sleeps 6)				
Season	Nightly Rate (in Vacation Credits)			Weekly Total	Season	Nightly Rate (in Vacation Credits)			Weekly Total	Season	Nightly Rate (in Vacation Credits)			Weekly Total
	Mon-Thu	Fri-Sat	Sun			Mon-Thu	Fri-Sat	Sun			Mon-Thu	Fri-Sat	Sun	
BLUE	350	700	500	3300	BLUE	300	600	450	2850	BLUE	450	900	650	4250
WHITE	550	1150	850	5350	WHITE	550	1100	850	5250	WHITE	700	1500	1100	6900
RED 3	1000	2050	1550	9650	RED 3	1100	2300	1750	10750	RED 3	1300	2650	2000	12500
RED 2	1600	3350	2500	15600	RED 2	1800	3750	2800	17500	RED 2	1975	4050	3000	19000
RED 1	2350	4850	3650	22750	RED 1	2650	5500	4100	25700	RED 1	2800	5750	4300	27000

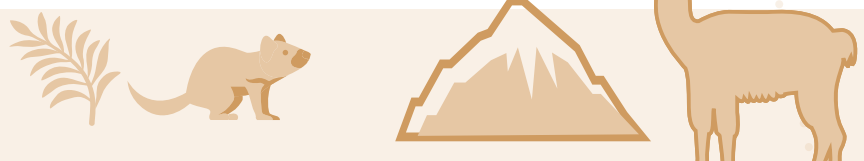
3-Bedroom Deluxe (Sleeps 8)					2-Bedroom Presidential (Sleeps 6)					3-Bedroom Grand (Sleeps 8)				
Season	Nightly Rate (in Vacation Credits)			Weekly Total	Season	Nightly Rate (in Vacation Credits)			Weekly Total	Season	Nightly Rate (in Vacation Credits)			Weekly Total
	Mon-Thu	Fri-Sat	Sun			Mon-Thu	Fri-Sat	Sun			Mon-Thu	Fri-Sat	Sun	
BLUE	450	950	700	4400	BLUE	550	1050	800	5100	BLUE	550	1100	850	5250
WHITE	800	1550	1150	7450	WHITE	850	1750	1300	8200	WHITE	900	1850	1400	8700
RED 3	1350	2850	2100	13200	RED 3	1550	3200	2400	15000	RED 3	1600	3350	2500	15600
RED 2	2200	4575	3450	21400	RED 2	2350	4900	3800	23000	RED 2	2450	4825	3700	23150
RED 1	3250	6750	5050	31550	RED 1	3400	7000	5400	33000	RED 1	3550	7050	5350	33650

4-Bedroom Grand (Sleeps 8)					3-Bedroom Presidential (Sleeps 8)				
Season	Nightly Rate (in Vacation Credits)			Weekly Total	Season	Nightly Rate (in Vacation Credits)			Weekly Total
	Mon-Thu	Fri-Sat	Sun			Mon-Thu	Fri-Sat	Sun	
BLUE	750	1550	1150	7250	BLUE	700	1425	1050	6700
WHITE	1250	2600	1950	12150	WHITE	1150	2350	1750	11050
RED 3	2250	4700	3500	21900	RED 3	2050	4250	3200	19900
RED 2	3300	6500	4800	31000	RED 2	3000	5850	4300	28000
RED 1	4000	8400	6200	39000	RED 1	4300	8650	6500	41000

All standard 3-Bedroom apartments and 2 and 3-Bedroom Deluxe apartments have internal stairs and may not be suitable for those with mobility issues.


For more resort details, visit [discoverybywyndham.com](https://discoverybywyndham.com)  
 See pages 42-43 for resort facilities.



# PERTH CITY



## CLUB WYNDHAM PERTH

 32 OUTRAM ST, WEST PERTH WA 6005, AUSTRALIA

One of the jewels of Western Australia, Perth is known as a city of fair, temperate weather with unique culture, history, and charm. Visitors enjoy soft-sand beaches, scenic parks, creative restaurants, and curated street art.

Club Wyndham Perth is a boutique hotel in the heart of Perth's west, close to the city's shopping, nightlife, and dining precincts in the CBD and Subiaco. Catch a ferry to experience Rottnest Island's incredible beaches, take a road trip to the wineries of the Swan Valley, or join the sports-loving locals at a game at nearby Subiaco Oval. You will never run out of things to do during your stay.



Studio Deluxe




Club Wyndham Perth




2-bedroom

### LOCAL ATTRACTIONS (Distances are listed as an approximate indication only)

- Kings Park and Botanic Garden 600m
- Subiaco Oval 1.5km
- Perth City 2.5km
- Rottnest Island Ferry 4km
- Swan Bells 4km
- Cottesloe Beach 11.1km
- Perth Airport (International) 18.3km
- Dunsborough 250km
- Margaret River 268km

 Beaches, Fremantle, Subiaco Village, cafés, Swan River cruises, the Perth Mint, Rottnest Island day trip via ferry, local breweries and Swan Valley wineries.

 Limited onsite and undercover car parking available (charges apply). Nearby car parking also available (charges apply).

### SEASONALITY

2024		2025	
1 Jan - 5 Jan	RED 2	1 Jan - 10 Jan	RED 2
6 Jan - 8 Mar	RED 4	11 Jan - 14 Mar	RED 4
9 Mar - 29 Mar	RED 5	15 Mar - 4 Apr	RED 5
30 Mar - 12 Apr	RED 3	5 Apr - 11 Apr	RED 4
13 Apr - 26 Apr	RED 4	12 Apr - 25 Apr	RED 3
27 Apr - 17 May	WHITE	26 Apr - 2 May	RED 4
18 May - 7 Jun	BLUE	3 May - 23 May	WHITE
8 Jun - 21 Jun	WHITE	24 May - 13 Jun	BLUE
22 Jun - 19 Jul	RED 4	14 Jun - 27 Jun	WHITE
20 Jul - 9 Aug	WHITE	28 Jun - 25 Jul	RED 4
10 Aug - 13 Sep	RED 5	26 Jul - 15 Aug	WHITE
14 Sep - 27 Sep	RED 3	16 Aug - 19 Sep	RED 5
28 Sep - 11 Oct	RED 4	20 Sep - 26 Sep	RED 4
12 Oct - 22 Nov	RED 5	27 Sep - 10 Oct	RED 3
23 Nov - 13 Dec	RED 4	11 Oct - 17 Oct	RED 4
14 Dec - 20 Dec	RED 3	18 Oct - 28 Nov	RED 5
21 Dec - 31 Dec	RED 1	29 Nov - 19 Dec	RED 4
		20 Dec - 26 Dec	RED 3
		27 Dec - 31 Dec	RED 1

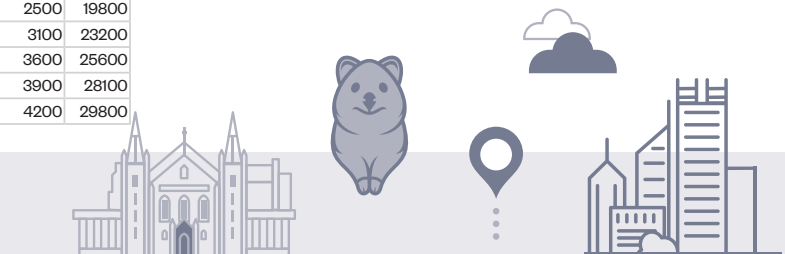
### CREDIT CHARTS

Studio Deluxe (Sleeps 2)					1-Bedroom Deluxe (Sleeps 4)				
Season	Nightly Rate (in Vacation Credits)			Weekly Total	Season	Nightly Rate (in Vacation Credits)			Weekly Total
	Mon-Thu	Fri-Sat	Sun			Mon-Thu	Fri-Sat	Sun	
BLUE	700	2450	850	8550	BLUE	850	3100	1100	10700
WHITE	950	2500	1300	10100	WHITE	1150	3250	1600	12700
RED 5	1050	2550	1400	10700	RED 5	1350	3300	1750	13750
RED 4	1500	2600	1950	13150	RED 4	1950	3350	2300	16800
RED 3	2000	2750	2200	15700	RED 3	2550	3600	2800	20000
RED 2	2300	2800	2300	17100	RED 2	3000	3450	3000	21900
RED 1	2400	2900	2500	17900	RED 1	3050	3700	3200	22800

2-Bedroom (Sleeps 6)				
Season	Mon-Thu	Fri-Sat	Sun	Weekly Total
BLUE	1150	4000	1500	14100
WHITE	1550	4125	2175	16625
RED 5	2250	4150	2500	19800
RED 4	2850	4350	3100	23200
RED 3	3300	4400	3600	25600
RED 2	3800	4500	3900	28100
RED 1	4000	4800	4200	29800

Parking is limited and incurs an additional charge, which is subject to price fluctuation.




# DUNSBOROUGH

MARGARET RIVER REGION



## CLUB WYNDHAM DUNSBOROUGH

 700 CAVES ROAD, DUNSBOROUGH, WA, 6281, AUSTRALIA



1-bedroom Deluxe



2-bedroom





Enter a laidback world of gourmet food and wine trails, vineyards and breathtaking vistas in Western Australia's southwest.

Club Wyndham Dunsborough is set absolute beachfront on the shores of Geographe Bay, at the northernmost point of the Margaret River region. Spend laidback days by the beach, get your heart racing in the nearby surf or visit the Busselton Jetty, the ancient Ngilgi Cave and other local attractions. If you don't feel like leaving the resort, indulge at the day spa then dine at the fireside lounge bar, Toby's Restaurant, or simply relax on the beach at the front and watch the waves roll in.

### LOCAL ATTRACTIONS (Distances are listed as an approximate indication only)

- Geographe Bay 0.3km
- Dunsborough town centre 10.4km
- Busselton Jetty 16km
- Ngilgi Caves 16km
- Yallingup 18.6km
- Margaret River wineries 35km
- Perth 240km
- Perth Airport 247km

 Beach fishing, famous surf breaks, galleries and art studios, gourmet food and wine trails, whale watching (seasonal).

 Free but limited onsite car parking available. Caravan and camper parking also available.

#### PLEASE NOTE:

This resort is a two-storey building with no elevator access. If you require a ground floor apartment, please ensure you book the room type located on the ground floor.

### SEASONALITY

2024		2025	
1 Jan - 5 Jan	RED 2	1 Jan - 10 Jan	RED 2
6 Jan - 19 Jan	RED 4	11 Jan - 24 Jan	RED 4
20 Jan - 26 Jan	RED 5	25 Jan - 31 Jan	RED 5
27 Jan - 23 Feb	WHITE	1 Feb - 28 Feb	WHITE
24 Feb - 22 Mar	RED 7	1 Mar - 28 Mar	RED 7
23 Mar - 29 Mar	RED 5	29 Mar - 18 Apr	RED 5
30 Mar - 5 Apr	RED 3	19 Apr - 25 Apr	RED 3
6 Apr - 26 Apr	RED 5	26 Apr - 2 May	RED 5
27 Apr - 3 May	WHITE	3 May - 9 May	WHITE
4 May - 21 Jun	BLUE	10 May - 27 Jun	BLUE
22 Jun - 19 Jul	RED 5	28 Jun - 25 Jul	RED 5
20 Jul - 2 Aug	BLUE	26 Jul - 8 Aug	BLUE
3 Aug - 13 Sep	WHITE	9 Aug - 19 Sep	WHITE
14 Sep - 18 Oct	RED 5	20 Sep - 24 Oct	RED 5
19 Oct - 8 Nov	RED 6	25 Oct - 14 Nov	RED 6
9 Nov - 6 Dec	RED 7	15 Nov - 12 Dec	RED 7
7 Dec - 13 Dec	RED 6	13 Dec - 19 Dec	RED 6
14 Dec - 20 Dec	RED 2	20 Dec - 26 Dec	RED 2
21 Dec - 31 Dec	RED 1	27 Dec - 31 Dec	RED 1

This resort is a two-storey building with no elevator access. If you require a ground floor apartment, please ensure you book the room type located on the ground floor.

### CREDIT CHARTS

Studio (Sleeps 2)					Studio Deluxe (Sleeps 2)					2-Bedroom (Sleeps 6)				
Season	Nightly Rate (in Vacation Credits)			Weekly Total	Season	Nightly Rate (in Vacation Credits)			Weekly Total	Season	Nightly Rate (in Vacation Credits)			Weekly Total
	Mon-Thu	Fri-Sat	Sun			Mon-Thu	Fri-Sat	Sun			Mon-Thu	Fri-Sat	Sun	
BLUE	200	800	400	2800	BLUE	250	900	450	3250	BLUE	275	1200	600	4100
WHITE	350	1150	700	4400	WHITE	400	1300	750	4950	WHITE	550	1600	1100	6500
RED 7	400	1250	800	4900	RED 7	450	1400	950	5550	RED 7	600	1900	1200	7400
RED 6	600	1500	1000	6400	RED 6	700	1700	1150	7350	RED 6	900	2200	1500	9500
RED 5	800	1900	1300	8300	RED 5	950	2100	1450	9450	RED 5	1150	2800	1800	12000
RED 4	1300	2100	1500	10900	RED 4	1450	2350	1750	12250	RED 4	1900	3050	2200	15900
RED 3	1600	2300	1900	12900	RED 3	1850	2650	2150	14850	RED 3	2350	3350	2800	18900
RED 2	1700	2500	2100	13900	RED 2	1950	2850	2350	15850	RED 2	2500	3800	3000	20600
RED 1	2300	3100	2500	17900	RED 1	2650	3550	2850	20550	RED 1	3400	4550	3600	26300

1-Bedroom Deluxe (Sleeps 4)					2-Bedroom Deluxe (Sleeps 6)					2-Bedroom Grand (Sleeps 6)				
Season	Nightly Rate (in Vacation Credits)			Weekly Total	Season	Nightly Rate (in Vacation Credits)			Weekly Total	Season	Nightly Rate (in Vacation Credits)			Weekly Total
	Mon-Thu	Fri-Sat	Sun			Mon-Thu	Fri-Sat	Sun			Mon-Thu	Fri-Sat	Sun	
BLUE	350	1150	550	4250	BLUE	350	1350	700	4800	BLUE	450	1650	850	5950
WHITE	550	1750	1000	6700	WHITE	600	1950	1200	7500	WHITE	750	2350	1450	9150
RED 7	600	1850	1200	7300	RED 7	650	2050	1350	8050	RED 7	800	2550	1650	9950
RED 6	850	2250	1450	9350	RED 6	1100	2500	1650	11050	RED 6	1300	3050	2050	13350
RED 5	1150	2850	1950	12250	RED 5	1350	3100	2150	13750	RED 5	1700	3800	2650	17050
RED 4	1950	3150	2250	16350	RED 4	2150	3500	2550	18150	RED 4	2550	4250	3050	21750
RED 3	2350	3450	2850	19150	RED 3	2650	3850	3150	21450	RED 3	3250	4800	3950	26550
RED 2	2550	3750	3150	20850	RED 2	2850	4150	3500	23200	RED 2	3450	5100	4300	28300
RED 1	3450	4650	3750	26850	RED 1	3850	5100	4200	29800	RED 1	4750	6200	5100	36500

For more resort details, visit [discoverybywyndham.com](https://discoverybywyndham.com)  
See pages 42-43 for resort facilities.



# NEW ZEALAND



The land of the long white cloud has a magnetic pull for travellers of all ages thanks to its diverse landscapes, plethora of high-octane adventure activities, Maori culture and geothermal wonders. World renowned for its pristine, snow-capped mountains, rolling green pastures and crystal clear lakes, New Zealand's pure beauty will take your breath away.



ROTORUA



WANAKA





# DISCOVER ENDLESS ADVENTURES

## Wanaka, New Zealand - Aotearoa

**W**anaka is a popular destination for anglers because of its scenic lakes, with Lake Wanaka being a top spot for brown and rainbow trout and salmon. Fishing is best during early morning or late evening, and can be done from shore or by boat. For a more secluded experience, the Matukituki River is an hour's drive away and offers panoramic views of Mount Aspiring. Fishing for rainbow trout is best during summer when water levels are lower.

Club Wyndham Wanaka has fishing gear and equipment available for owners.

## Rotorua, New Zealand - Aotearoa

**R**otorua in New Zealand is surrounded by stunning lakes and rivers that are teeming with fish. Start your fishing adventure in Lake Rotorua, where you can catch brown and rainbow trout, and even salmon. Another great fishing spot is Ngongotaha Stream, a 20-minute drive from the resort. It is famous for its abundant rainbow trout population and a good option for those who prefer to fish in a more intimate setting.

If you are staying at Club Wyndham Rotorua, you can enjoy free use of fishing rods, and the resort offers a fish smoker onsite..



# ROTORUA

## NORTH ISLAND



### CLUB WYNDHAM ROTORUA

1420 HAMURANA ROAD, MOUREA, ROTORUA 3074,  
NEW ZEALAND



3-bedroom

The Clubhouse Cafe and Bar

Rotorua is a fascinating holiday destination that mixes culture, adventure, and relaxation. Renowned for being a hotbed of thermal activity, Rotorua's hot springs and spas make it the perfect getaway for pampering, stress release, and rejuvenation.

Rotorua is also a place where you can truly get the heart pumping. Adrenaline-raising attractions punctuate the Rotorua landscape, from thrilling luge rides to white water rafting and rolling down a hill in a giant translucent ball (zorb). If all that is not enough for you, then you also have an area rich in Maori history and culture and friendly locals to walk you through it all.

Club Wyndham Rotorua has excellent resort facilities, including an outdoor swimming pool, heated spa, gym, tennis court, and a superb position right on the water's edge that offers beautiful views over the Ohau Channel and Lake Rotorua.

#### LOCAL ATTRACTIONS (Distances are listed as an approximate indication only)

- Okere Falls Park 6.4km
- Hell's Gate Geothermal Reserve and Mud Spa 9km
- Rotorua Regional Airport 9.3km
- Whakarewarewa Forest 16.3km
- Rotorua Town Centre 17.7km
- Skyline Rotorua 19km
- Te Pā Tū (previously Tamaki Māori Village) 30km
- Waimangu Volcanic Valley 39.5km
- Hobbiton 77.4km
- Lake Taupo 95km
- Waitomo Caves 144km
- Auckland Airport 222km

Geothermal parks, hiking, white water rafting, mountain biking, hot springs, kiwi hatchery and fishing.

Free onsite car parking available

**PLEASE NOTE:**

There is no public transport available from the resort - a car is highly recommended. All apartments have internal stairs and may not be suitable for those with mobility issues.

#### SEASONALITY

2024		2025	
1 Jan - 26 Apr	RED	1 Jan - 2 May	RED
27 Apr - 17 May	WHITE	3 May - 23 May	WHITE
18 May - 7 Jun	BLUE	24 May - 13 Jun	BLUE
8 Jun - 14 Jun	WHITE	14 Jun - 20 Jun	WHITE
15 Jun - 19 Jul	RED	21 Jun - 25 Jul	RED
20 Jul - 23 Aug	BLUE	26 Jul - 29 Aug	BLUE
24 Aug - 6 Sep	WHITE	30 Aug - 12 Sep	WHITE
7 Sep - 18 Oct	RED	13 Sep - 24 Oct	RED
19 Oct - 1 Nov	WHITE	25 Oct - 7 Nov	WHITE
2 Nov - 31 Dec	RED	8 Nov - 31 Dec	RED

#### CREDIT CHARTS

2-Bedroom (Sleeps 6)					2-Bedroom Deluxe (Sleeps 6)				
Season	Nightly Rate (in Vacation Credits)			Weekly Total	Season	Nightly Rate (in Vacation Credits)			Weekly Total
	Mon-Thu	Fri-Sat	Sun			Mon-Thu	Fri-Sat	Sun	
BLUE	700	1125	950	6000	BLUE	850	1275	1050	7000
WHITE	1000	1450	1100	8000	WHITE	1150	1600	1200	9000
RED	1250	1800	1400	10000	RED	1400	1950	1500	11000

3-Bedroom (Sleeps 8)					3-Bedroom Deluxe (Sleeps 8)				
Season	Nightly Rate (in Vacation Credits)			Weekly Total	Season	Nightly Rate (in Vacation Credits)			Weekly Total
	Mon-Thu	Fri-Sat	Sun			Mon-Thu	Fri-Sat	Sun	
BLUE	1000	1450	1100	8000	BLUE	1150	1600	1200	9000
WHITE	1250	1800	1400	10000	WHITE	1400	1950	1500	11000
RED	1500	2100	1800	12000	RED	1650	2250	1900	13000


All apartments (except special needs rooms) have both internal and external stairs and may not be suitable for those with mobility issues.



# WANAKA

## SOUTH ISLAND

## CLUB WYNDHAM WANAKA

 109 WANAKA-MOUNT ASPIRING ROAD, LAKE WANAKA,  
9305, NEW ZEALAND





Whether you are into thrills, wildlife, nature, photography, sport or food, Wanaka is the ideal holiday destination for you.

Nestled at the foot of New Zealand's Southern Alps, some of the world's best snow slopes are in easy reach – or experience the thrill of jetboating or rafting. Mt Aspiring National park lends itself to stunning photographs any time of year, but they are particularly magical in the warmer months. High-quality food and wine, much of it produced locally, is freely available and perfect for warming your body and spirit!

### LOCAL ATTRACTIONS (Distances are listed as an approximate indication only)

- Lake Wanaka 1km
- Puzzling World 4.5km
- Transport and Toy Museum 11.7km
- Wanaka Airport 12km
- Treble Cone 21.3km
- Cardrona 25.9km
- Snow Farm 37km
- Mt Aspiring National Park 45km
- Queenstown 69km
- Christchurch 429km

 Fishing, mountain bike trails, national parks, scenic flights, ski fields (Treble Cone, Snow Farm and Cardrona).

 Free onsite car parking available. Caravan and camper parking also available.

### SEASONALITY

2024		2025	
1 Jan - 19 Jan	RED 1	1 Jan - 24 Jan	RED 1
20 Jan - 26 Jan	RED 3	25 Jan - 31 Jan	RED 4
27 Jan - 29 Mar	RED 6	1 Feb - 4 Apr	RED 6
30 Mar - 5 Apr	RED 1	5 Apr - 11 Apr	RED 5
6 Apr - 19 Apr	RED 2	12 Apr - 18 Apr	RED 3
20 Apr - 26 Apr	RED 5	19 Apr - 25 Apr	RED 1
27 Apr - 21 Jun	RED 9	26 Apr - 2 May	RED 5
22 Jun - 28 Jun	RED 7	3 May - 27 Jun	RED 9
29 Jun - 5 Jul	RED 5	28 Jun - 11 Jul	RED 2
6 Jul - 16 Aug	RED 4	12 Jul - 18 Jul	RED 5
17 Aug - 13 Sep	RED 3	19 Jul - 22 Aug	RED 4
14 Sep - 27 Sep	RED 2	23 Aug - 19 Sep	RED 3
28 Sep - 11 Oct	RED 5	20 Sep - 3 Oct	RED 2
12 Oct - 8 Nov	RED 8	4 Oct - 10 Oct	RED 5
9 Nov - 20 Dec	RED 7	11 Oct - 17 Oct	RED 7
21 Dec - 31 Dec	RED 1	18 Oct - 14 Nov	RED 8
		15 Nov - 26 Dec	RED 7
		27 Dec - 31 Dec	RED 1

### CREDIT CHARTS

Studio (Sleeps 2)					1-Bedroom (Sleeps 4)					1-Bedroom Deluxe (Sleeps 2)				
Season	Nightly Rate (in Vacation Credits)			Weekly Total	Season	Nightly Rate (in Vacation Credits)			Weekly Total	Season	Nightly Rate (in Vacation Credits)			Weekly Total
	Mon-Thu	Fri-Sat	Sun			Mon-Thu	Fri-Sat	Sun			Mon-Thu	Fri-Sat	Sun	
RED 9	480	970	740	4600	RED 9	640	1330	990	6210	RED 9	700	1400	1050	6650
RED 8	550	1130	840	5300	RED 8	730	1540	1155	7155	RED 8	800	1650	1200	7700
RED 7	720	1500	1120	7000	RED 7	970	2030	1510	9450	RED 7	1050	2175	1600	10150
RED 6	980	2070	1540	9600	RED 6	1330	2780	2080	12960	RED 6	1425	3000	2200	13900
RED 5	1120	2340	1740	10900	RED 5	1510	3160	2355	14715	RED 5	1625	3350	2600	15800
RED 4	1210	2540	1880	11800	RED 4	1630	3430	2550	15930	RED 4	1750	3675	2750	17100
RED 3	1340	2790	2060	13000	RED 3	1800	3770	2810	17550	RED 3	1925	4050	3050	18850
RED 2	1435	3010	2240	14000	RED 2	1940	4060	3020	18900	RED 2	2075	4375	3250	20300
RED 1	1540	3220	2400	15000	RED 1	2080	4350	3230	20250	RED 1	2225	4675	3500	21750

2-Bedroom (Sleeps 6)					3-Bedroom (Sleeps 8)					3-Bedroom Deluxe (Sleeps 6)				
Season	Nightly Rate (in Vacation Credits)			Weekly Total	Season	Nightly Rate (in Vacation Credits)			Weekly Total	Season	Nightly Rate (in Vacation Credits)			Weekly Total
	Mon-Thu	Fri-Sat	Sun			Mon-Thu	Fri-Sat	Sun			Mon-Thu	Fri-Sat	Sun	
RED 9	730	1530	1150	7130	RED 9	850	1780	1320	8280	RED 9	900	1850	1350	8650
RED 8	840	1770	1315	8215	RED 8	980	2050	1520	9540	RED 8	1025	2150	1550	9950
RED 7	1110	2330	1750	10850	RED 7	1290	2710	2020	12600	RED 7	1375	2825	2100	13250
RED 6	1525	3200	2380	14880	RED 6	1770	3720	2760	17280	RED 6	1850	3900	2850	18050
RED 5	1730	3640	2695	16895	RED 5	2010	4220	3140	19620	RED 5	2125	4400	3400	20700
RED 4	1880	3920	2930	18290	RED 4	2180	4560	3400	21240	RED 4	2300	4800	3550	22350
RED 3	2070	4330	3210	20150	RED 3	2400	5030	3740	23400	RED 3	2525	5300	3900	24600
RED 2	2220	4670	3480	21700	RED 2	2580	5420	4040	25200	RED 2	2725	5700	4200	26500
RED 1	2380	5000	3730	23250	RED 1	2770	5800	4320	27000	RED 1	2900	6100	4550	28350

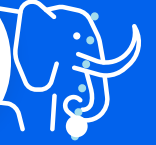
3-Bedroom Presidential (Sleeps 6)					4-Bedroom Presidential (Sleeps 8)				
Season	Nightly Rate (in Vacation Credits)			Weekly Total	Season	Nightly Rate (in Vacation Credits)			Weekly Total
	Mon-Thu	Fri-Sat	Sun			Mon-Thu	Fri-Sat	Sun	
RED 9	1325	2775	2000	12850	RED 9	1575	3275	2350	15200
RED 8	1525	3175	2300	14750	RED 8	1800	3775	2700	17450
RED 7	2025	4200	3100	19600	RED 7	2375	4975	3650	23100
RED 6	2775	5775	4250	26900	RED 6	3250	6825	5000	31650
RED 5	3125	6600	5100	30800	RED 5	3700	7725	5950	36200
RED 4	3375	7100	5300	33000	RED 4	4000	8375	6200	38950
RED 3	3731	7826	5824	36400	RED 3	4400	9250	6800	42900
RED 2	4018	8428	6272	39200	RED 2	4750	9925	7350	46200
RED 1	4305	9030	6720	42000	RED 1	5075	10650	7900	49500

For more resort details, visit [discoverybywyndham.com](https://discoverybywyndham.com)  
See pages 42-43 for resort facilities.





# THAILAND



**P**huket, the largest of the Thai islands, offers rich and varied experiences for every kind of traveller. With everything from white sand beaches, diving wonderlands, wildlife sanctuaries, and national parks to fabulous food and some of the finest spas in Thailand, this is a destination you may never want to leave.





# PHUKET

## THAILAND



## CLUB WYNDHAM SEA PEARL PHUKET

12/1-9 PRABARAMEE ROAD, PATONG, PHUKET 83150, PATONG, KATHU DISTRICT, THAILAND



One look at Phuket's magnificent white sand beaches and lush rainforests will explain why this part of Thailand is one of South East Asia's most popular tourist destinations.

Club Wyndham Sea Pearl Resort Phuket is an upscale property set on the peaceful slopes of Patong Hill, with outstanding views and in close proximity to renowned Patong Beach. Use the resort's daily shuttle to travel into Patong and meet the friendly locals or organise a trip to a quieter beach destination. The island is bursting with natural and cultural attractions, like the Kathu Waterfall, Wat Chalong temple and the Phuket FantaSea Show. At any time, you can laze the day away at one of the resort's eight pools, spa, pool bar or by strolling through the manicured grounds.

### LOCAL ATTRACTIONS (Distances are listed as an approximate indication only)

- Bangla Road 2.2km
- Patong Beach 2.8km
- Flying Hanuman (zipline) 5km
- Kathu Waterfall 6km
- Phang Ngo Bay National Park 80.6km
- Freedom Beach 12km
- Wat Chalong 15km
- Phuket FantaSea Show 17.3km
- Phuket International Airport 36.6km

Shopping, surfing, snorkelling, diving and island tours.

Free onsite car parking available.

### SEASONALITY

2024		2025	
1 Jan - 5 Jan	RED 1	1 Jan - 10 Jan	RED 1
6 Jan - 26 Jan	RED 3	11 Jan - 31 Jan	RED 3
27 Jan - 9 Feb	WHITE	1 Feb - 14 Feb	WHITE
10 Feb - 15 Mar	BLUE	15 Feb - 21 Mar	BLUE
16 Mar - 29 Mar	WHITE	22 Mar - 4 Apr	WHITE
30 Mar - 26 Apr	RED 3	5 Apr - 2 May	RED 3
27 Apr - 14 Jun	WHITE	3 May - 20 Jun	WHITE
15 Jun - 21 Jun	RED 3	21 Jun - 27 Jun	RED 3
22 Jun - 28 Jun	RED 2	28 Jun - 4 Jul	RED 2
29 Jun - 12 Jul	RED 1	5 Jul - 18 Jul	RED 1
13 Jul - 19 Jul	RED 2	19 Jul - 25 Jul	RED 2
20 Jul - 26 Jul	RED 3	26 Jul - 1 Aug	RED 3
27 Jul - 13 Sep	WHITE	2 Aug - 19 Sep	WHITE
14 Sep - 27 Sep	RED 2	20 Sep - 3 Oct	RED 2
28 Sep - 11 Oct	RED 3	4 Oct - 17 Oct	RED 3
12 Oct - 25 Oct	WHITE	18 Oct - 31 Oct	WHITE
26 Oct - 8 Nov	BLUE	1 Nov - 14 Nov	BLUE
9 Nov - 22 Nov	WHITE	15 Nov - 28 Nov	WHITE
23 Nov - 20 Dec	RED 3	29 Nov - 26 Dec	RED 3
21 Dec - 31 Dec	RED 1	27 Dec - 31 Dec	RED 1

Deluxe King Hotel (Sleeps 2)				
Season	Nightly Rate (in Vacation Credits)			Weekly Total
	Mon-Thu	Fri-Sat	Sun	
BLUE	600	750	700	4600
WHITE	900	1150	1050	6950
RED 3	1650	2100	1900	12700
RED 2	2450	3100	2850	18850
RED 1	2750	3450	3200	21100

1-Bedroom Grand Pool Suite (Sleeps 2)				
BLUE	1200	1550	1350	9250
WHITE	1800	2250	2100	13800
RED 3	3200	4050	3750	24650
RED 2	4800	6000	5550	36750
RED 1	5400	6750	6200	41300

2-Bedroom Grand Pool Suite (Sleeps 4)				
BLUE	1400	1800	1600	10800
WHITE	2100	2650	2450	16150
RED 3	3750	4750	4350	28850
RED 2	5600	7000	6450	42850
RED 1	6350	7900	7250	48450

Deluxe Twin Hotel (Sleeps 2)				
Season	Nightly Rate (in Vacation Credits)			Weekly Total
	Mon-Thu	Fri-Sat	Sun	
BLUE	650	850	750	5050
WHITE	1000	1250	1150	7650
RED 3	1800	2250	2050	13750
RED 2	2650	3300	3050	20250
RED 1	3000	3750	3450	22950

2-Bedroom Deluxe (Sleeps 4)				
BLUE	1100	1400	1300	8500
WHITE	1650	2100	1900	12700
RED 3	3000	3750	3450	22950
RED 2	4450	5550	5100	34000
RED 1	5000	6250	5750	38250

3-Bedroom Deluxe (Sleeps 6)				
BLUE	1400	1750	1650	10750
WHITE	2100	2650	2450	16150
RED 3	3800	4750	4400	29100
RED 2	5650	7050	6500	43200
RED 1	6350	7950	7300	48600

1-Bedroom Grand (Sleeps 2)					
Season	Nightly Rate (in Vacation Credits)			Weekly Total	
	Mon-Thu	Fri-Sat	Sun		
BLUE	1050	1350	1200	8100	
WHITE	1600	2000	1850	12250	
RED 3	2850	3600	3300	21900	
RED 2	4250	5300	4900	32500	
RED 1	4800	6000	5500	36700	

2-Bedroom Grand Spa Suite (Sleeps 4)					
BLUE	1350	1750	1550	10450	
WHITE	2050	2600	2400	15800	
RED 3	3650	4600	4250	28050	
RED 2	5450	6800	6300	41700	
RED 1	6150	7700	7050	47050	

For more resort details, visit [discoverybywyndham.com](https://discoverybywyndham.com) See pages 42-43 for resort facilities.

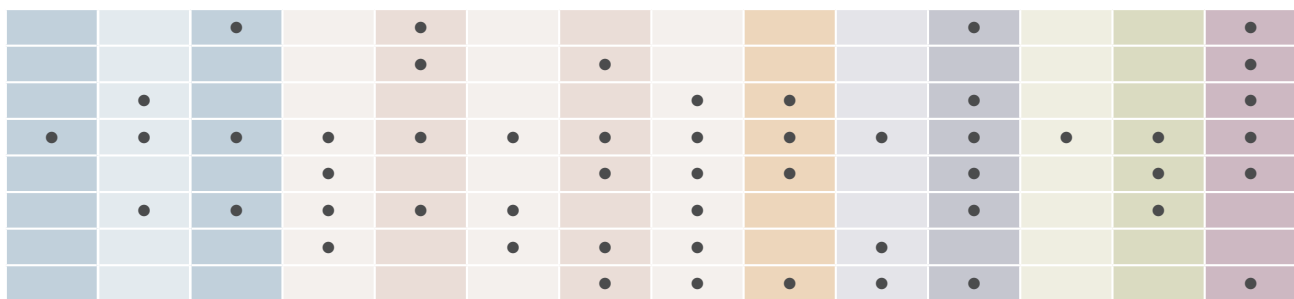
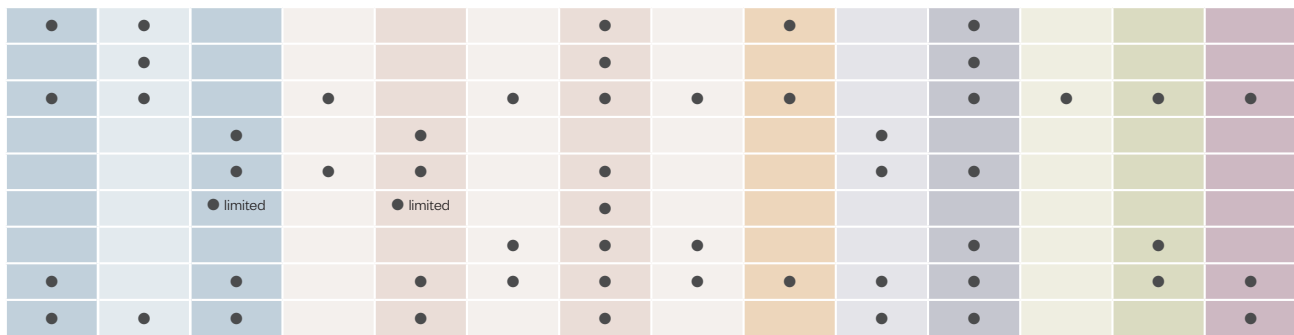
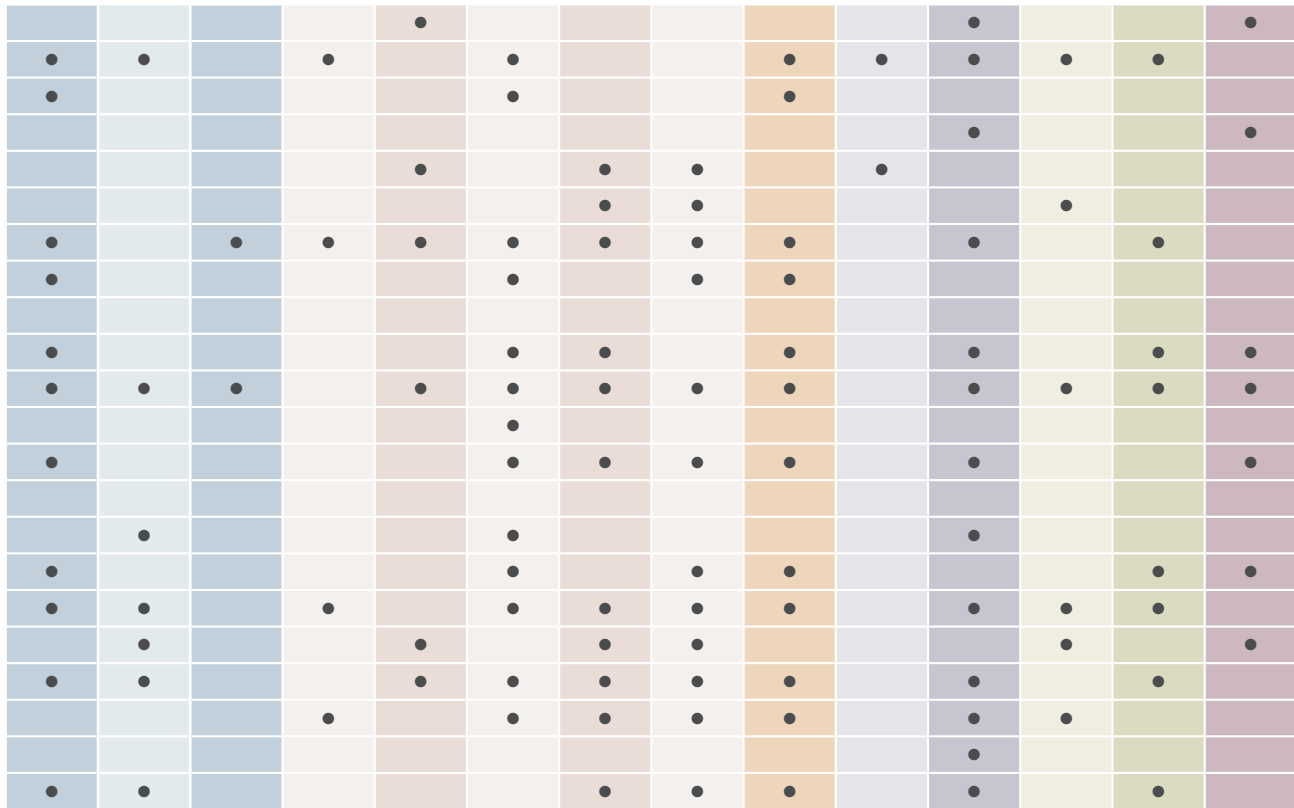
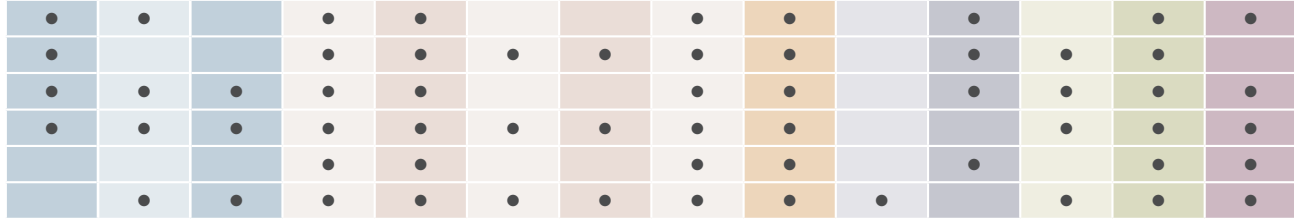


# RESORT FACILITIES

	Denarau Island	Port Douglas	Airlie Beach	Marcoola Beach	Golden Beach	Surfers Paradise	Kirra Beach	Coffs Harbour	Coffs Harbour - Terraces
Page Number	15	17	18	19	20	21	22	23	24
<b>DINING AND SHOPPING FACILITIES</b>									
Bar	●	●	●	●		●			
BBQ facilities (shared)	●				●	●	●	●	
Onsite café/restaurant	●	●	●	●	●	●	●		
Café/restaurants nearby	●		●	●	●	●	●		
In-room dining	●	●	●			●			
Shops nearby	●	●	●	●	●	●	●	●	●
<b>SPORTS AND LEISURE</b>									
Beauty/massage treatment	●	●		●	●				
Onsite bicycle hire	●	●	●	●	●		●		
Pool table		●			●				
Onsite day spa	●	●		●					
Day spa nearby	●		●		●	●	●	●	●
DVD rental		●		●	●	●			●
In-room movies	●		●		●	●	●	●	
Games room		●			●				
Onsite golf course								●	●
Golf course nearby	●	●	●	●		●	●	●	●
Gym/exercise room	●	●	●	●	●	●	●		
Kids' club (seasonal)	●						●		
Kids' playground	●						●		
Mini golf							●		
Paddle boats/canoes (seasonal)	●				●				
Sauna/steam room							●		
Spa pool/hot tub	●		●		●	●	●	●	●
Swimming pool	●	●	●						●
Swimming pool (heated)		●		●	●	●	●	●	
Tennis court					●			●	●
Water sports equipment	●				●				
Wineries nearby					●	●			
<b>LOCATION/PARKING/ACCESS</b>									
Beach - walking distance	●	●	●	●	●	●	●	●	●
Beachfront access	●			●					
Car parking - free	●	●	●	●	●	●	●	●	●
Car parking - (charges apply)									
Car parking - limited	●	●			●				
Car parking - undercover			●	●	●	●	●	● limited	● limited
Caravan or camper parking									
Disabled resort access	●	●	●	●	●	●	●	●	
Elevators	●	●		●	●	●	●	●	
<b>OTHER FACILITIES</b>									
24-hour Reception	●	●		●			●	●	●
Business facilities									
Conference/meeting/wedding facilities	●	●		●					
In-room internet access - Wi-Fi	●	●	●	●	●	●	●	●	●
Internet access - lobby kiosk	●	●			●			●	
Laundry facilities (shared)		●		●	●				●
Lounge					●	●		●	
Tour desk		●			●	●	●	●	●

Some of the resort facilities in this table may incur a fee and vary depending on resorts. \*Elevator access only to certain rooms.

<i>Flynns Beach (Port Macquarie)</i>	<i>Shoal Bay</i>	<i>Sydney</i>	<i>Dinner Plain</i>	<i>Melbourne</i>	<i>Ballarat</i>	<i>Torquay</i>	<i>Phillip Island</i>	<i>Seven Mile Beach</i>	<i>Perth</i>	<i>Dunsborough</i>	<i>Rotorua</i>	<i>Wanaka</i>	<i>Phuket</i>
25	26	27	28	29	30	31	32	33	34	35	38	39	41



# PROGRAM GUIDELINES

# CLUB WYNDHAM

Discovery by Wyndham ('Discovery' or 'Discovery Program') is provided by Wyndham Destinations Asia Pacific Pty Ltd ('Wyndham'), which is also the Developer of the Club Wyndham South Pacific ARSN 092 334 015 ('Club Wyndham South Pacific' or 'the Club').

The Developer has established the Discovery Program for those who may be interested in joining Club Wyndham South Pacific and may not be in a position to do so at the present time. A Discovery membership enables Discovery members to experience some of the benefits and selected Discovery Resorts that will become available to them should they become a Club Wyndham South Pacific owner. Existing Club Wyndham South Pacific owners are not eligible to join the Discovery Program.

A Discovery membership allows Discovery members to choose how they utilise their one-time use credits (Discovery Credits), whether that be for one large holiday or multiple shorter getaways in quality accommodation; stays in high (Red), mid (White) or low (Blue) seasons; or in different Resort Apartment sizes and types.

Membership in the Discovery Program is separate and distinct from ownership in the Club. The Club has its own specific rules, regulations, guidelines and use conditions. Benefits of the Club, such as Bonus Time, Grab Its and guest usage; the ability to exchange Credits with exchange companies; and Developer benefits, such as Fun Time, Associate Resorts and Lifestyle by Wyndham tier benefits are not available to Discovery members. For the avoidance of doubt, becoming a Discovery member does not make Discovery members owners in the Club nor entitle them to any interest in the club.

These Discovery Program Guidelines govern use of the Discovery Program by Discovery members. Wyndham, as the provider of the Discovery Program, may amend, revoke, modify or add to the Discovery Program's benefits or guidelines at any time at its complete discretion without prior notice. These changes may also include, but are not limited to, the amendment of benefits, fees or hours of operation.

## 1. DISCOVERY MEMBERSHIP USE

- a. Discovery membership will commence within 12 calendar days after Purchase Date and Discovery members will receive correspondence from Wyndham accepting their application for a Discovery membership ("Transmission Date"). Transmission Date for a Discovery membership will commence within 12 calendar days after Purchase Date and Discovery members will receive correspondence from Wyndham accepting their application for a Discovery membership ("Transmission Date"). However, Discovery members will only be able to make reservations where the check-in dates will occur after the Travel Activation Date, per clause 1(b).
- b. The "Travel Activation Date" of Discovery memberships will be confirmed by Wyndham within 12 calendar days after the date when Wyndham has received either:
  - i. the full payment amount of the Discovery membership purchase price; or
  - ii. if the Discovery member(s) has chosen to pay by instalments, the date Wyndham receives the minimum Threshold Amount as advised on the Purchase Date (exclusive of GST and processing fees). Your minimum Threshold Amount is either AU\$1,100 for Australian members or NZ\$1,350 for New Zealand members (refer to point 2 of your signed Member Understanding and Acknowledgment for more information).
- c. Discovery members may only check-in for stays at selected Resorts included in the Discovery Program once the Travel

Activation Date has occurred.

- d. Discovery Credits are valid for 12 months from the Travel Activation Date, after which time they will expire ('Credit Expiry'). No extensions to the Credit Expiry date will be allowed.
  - e. Wyndham does, however, reserve the right to reinstate Discovery Credits to a Discovery member's account by issuing new Discovery Credits at their complete discretion.
  - f. Discovery members are solely responsible for ensuring Discovery Credits are utilised prior to the Credit Expiry date as noted in clause 1(d).
  - g. Discovery Credits have a 12-month booking window; each Discovery Credit is for one time use only and they are considered 'used' once the Discovery member(s) has/have received confirmation of their reservation from Wyndham and applicable number of Discovery Credits have been deducted from the Discovery member account.
  - h. All Discovery membership reservations must be at a Resort available through the Discovery Program, regardless of the source of Credits used.
  - i. Discovery Credits can only be used towards accommodation at the selected Resorts available through the Discovery Program and not towards other items including, but not limited to, housekeeping or any other Resorts available outside of the Discovery Program, including with exchange companies.
  - j. Discovery members are responsible for advising Wyndham of any changes to contact details including phone, mobile, email and postal address during their Discovery membership to ensure they are kept up to date with any changes or information related to their Discovery membership.
- ## 2. DURATION OF A DISCOVERY MEMBERSHIP
- a. The duration of a Discovery membership depends on a Discovery member's individual circumstances; in particular the date the Threshold Amount noted in clause 1(b)(ii) is paid to Wyndham and the subsequent Travel Activation Date occurs, and adheres to the reservation conditions as noted in clause 2(c).
  - b. Expiry of the Discovery membership is 24 months from the Travel Activation Date ('Membership Expiry') and no Discovery membership may extend past 36 months under any circumstances regardless of special considerations.
  - c. All Discovery member reservations must:
    - i. be made for a stay that occurs after the Travel Activation Date (refer clause 1(b)); and
    - ii. be made and confirmed within 12 months of the Travel Activation Date (after which time the Discovery Credits will expire); and
    - iii. ensure the last day of travel occurs within 12 months from the Expiry date (being 12 months from Travel Activation Date). Travel may not be extended past this date.
- ## 3. RESERVATIONS
- a. As a trial program, the Discovery Program is designed to allow Discovery members to personally experience Resort stays at selected Resorts. As such, unless otherwise authorised by Wyndham, only those persons registered on the Discovery membership are authorised to:
    - i. make reservations; and
    - ii. check-in for reservations with a reservation confirmation and suitable photo identification, such as a driver's licence;

- and
- iii. access information regarding their Discovery membership and reservations.
  - b. Confirmed reservations are not to be sold or rented to a third party.
  - c. Failure to comply with these conditions may result in the reservation being cancelled and Discovery Credits forfeited.
  - d. Discovery members are able to make reservations by contacting the Discovery Service Specialist Team via the phone or email details provided on the back of this Discovery Program Guide.
  - e. Online access to account information and online reservations are not benefits of a Discovery membership.
  - f. Reservations are:
    - i. subject to availability;
    - ii. honoured on a first to book, first served basis;
    - iii. made via a 'Best Fit System', a computerised reservations system that assigns the highest priority Resort Apartment available for the requested length of stay. Preference is given to those reservations made the furthest from the date of arrival and Resort Apartments with various special features, such as high floors or preferred views, are ranked higher than rooms without special features; and
    - iv. only considered final and valid once confirmed in writing (including via fax or email) to a Discovery member with a reservation number.
  - g. Wyndham does not guarantee any reservation other than that confirmed in the manner in clause 3(f).
  - h. Discovery members are advised to check reservation confirmations once received and contact the Discovery Service Specialist Team if any information is incorrect or if they have not received a reservation confirmation within a reasonable timeframe. The reservation confirmation will state:
    - i. the number of Discovery Credits charged for the reservation;
    - ii. the last date for change or cancellation without penalty; and
    - iii. time of Resort check-in and check-out.
  - j. High Demand Dates may apply and are determined by Club Wyndham South Pacific from time to time as having very high occupancy and typically include gazetted public holidays and school holidays. Please refer to High Demand Dates for Club Wyndham Sydney:
    - i. on page 27 of this Discovery Program Guide; or
    - ii. <https://discoverybywyndham.com/resort/club-wyndham-sydney>; or
    - iii. by contacting the Discovery Service Specialist Team on 1300 306 026 (AU) or 0800 306 026 (NZ) or at [discoveryteam@wyn.com](mailto:discoveryteam@wyn.com).
  - k. For Resort stays at Club Wyndham Denarau Island in Fiji, the Fiji Government charges an additional Services Turnover Tax (STT), which is based on the length of stay and type of apartment stayed in. Discovery members will be required to pay STT, in addition to the credit values that will apply for a stay at this resort and it will be applied to room accounts for payment on check-out.  
Further details of this additional fee can be obtained from the Discovery Service Specialist Team at (or prior to) booking.
  - l. Discovery members may make reservations at selected Resorts that are listed in this Discovery Program Guide and published at [www.discoverybywyndham.com/resorts](http://www.discoverybywyndham.com/resorts).
  - m. Not all Club Wyndham South Pacific resorts are included in the Discovery Program and Discovery Resorts may change from time to time without prior notice by Wyndham.
  - n. Discovery members with medical documentation or special needs may request specific room features when reserving a resort apartment, however, there is no guarantee all requests can be honoured as all reservations are subject to availability.

#### 4. FAMILY AND FRIENDS

- a. Family and friends are welcome to join a Discovery member during a resort stay provided the Discovery member is present at the time of check-in for all reservations and for the duration of the Resort stay.
- b. Applicable administration fees will apply when transferring, adding or removing a Discovery member to/from a Discovery membership after the date of purchase.

#### 5. WAITLISTS

- a. Should a Discovery member's desired Resort, room type or travel dates be unavailable, they may request a waitlist for their preferred reservation by contacting the Discovery Service Specialist Team to be notified should they become available. Please note, notification does not constitute a reservation unless confirmed in writing per clause 3(f)(iv).

#### 6. USE OF RENTAL CREDITS FOR DISCOVERY RESERVATIONS

- a. Should a Discovery member not have sufficient Discovery Credits to complete a reservation, additional one-off credits ("Rental Credits") may be purchased at a per credit rate. Please contact the Discovery Service Specialist Team for current rates.
- b. Rental Credits are for one time use only and a reservation using Rental Credits cannot be completed until all Rental Credits are paid in full.
- c. Rental Credits can only be used in conjunction with Discovery Credits and may not be used as a standalone method of payment.

#### 7. HOUSEKEEPING

- a. Each Discovery membership account is entitled to one (1) housekeeping token for the duration of the Discovery membership, which may be used for one (1) continuous stay in a Resort Apartment.
- b. For all other Resort stays and additional Resort Apartments, Discovery members will be required to pay the applicable housekeeping fee, which depends on room size and type. Refer to table on page 10 or go to [www.discoverybywyndham.com/discovery-program/](http://www.discoverybywyndham.com/discovery-program/) for current housekeeping rates.
- c. Housekeeping is payable at the time of making a reservation and the housekeeping service occurs at the end of the Discovery member's Resort stay.
- d. For reservations of eight (8) nights or more there will be a complimentary mid-stay room refresh.
- e. For consecutive night stays split between two (2) or more Resorts, applicable housekeeping fees will apply for each Resort Apartment reservation.
- f. Additional housekeeping services may be requested by contacting the Front Desk at the Resort and paying the applicable housekeeping fee.

#### 8. MINIMUM NIGHT STAYS

- a. There is a seven (7) night minimum stay during Red Season for any reservation booked more than nine (9) months in advance of the check-in date, unless that stay falls within clauses 8(b) and 8(c). This seven (7) night minimum stay is for consecutive nights and may be split between two (2) or more Resorts. Housekeeping fees will apply.
- b. There is no minimum stay for any reservation booked during Red Season 3, 4, 5, 6, 7, 8 or 9, unless the reservation includes either a Friday or Saturday, where there must be a two (2) night minimum stay.
- c. At Club Wyndham Sydney there is a three (3) night minimum stay during Red Season for any reservation booked more than nine (9) months in advance, except for those dates described as High Demand Dates, where there is a seven (7) night minimum stay. All three (3) night stays must be for consecutive nights. Seven (7) night stays must also be for consecutive nights but may be split between Club Wyndham Sydney and another Resort. Housekeeping fees will be applicable.

- d. There is a two (2) night minimum stay when either a Friday or a Saturday is included in the reservation, subject to two (2) nights being available.
- e. Only one (1) Friday AND Saturday night booking ('Weekend-Only' Booking) may be reserved on a Discovery membership at any one time for each full block of 6,000 Discovery Credits held. For example, a Discovery member with 20,000 Credits would be able to have three (3) Weekend-Only Bookings at any one time reserved on their account.
- f. For any Red Season reservation made less than nine (9) months from the date of check-in, there is no seven (7) night minimum, however the minimum stay requirement for reservations that include either a Friday or Saturday is two (2) nights.

#### 9. RESERVATION AMENDMENTS AND CANCELLATIONS

- a. Discovery members may amend or cancel a reservation by giving notice in the manner stated on a reservation confirmation.
- b. Discovery members will not be charged a cancellation fee provided notice is given within the allowable periods as outlined below:

FOR RESERVATIONS MADE:	CANCELLATIONS WILL BE ACCEPTED:
12 months to 61 days in advance	30 days before use
60 days to 15 days in advance	10 days before use
14 days to 48 hours in advance	48 hours before use
48 hours to 0 hours in advance	No cancellation allowed

Note: These timeframes may change from time to time. Discovery members will be notified of any changes.

- c. In consideration of clauses 9(a) and 9(b), Discovery members shall not be charged a cancellation fee and shall not forfeit the applicable number of Discovery Credits if the Discovery member:
  - i. alters a reservation by increasing the number of reserved nights at the reserved Resort Apartment; or
  - ii. alters a reservation by upgrading the type of reserved Resort Apartment, on condition that the number of nights reserved for the reservation does not decrease; or
  - iii. cancels a reservation and reinstates that cancelled reservation, subject to availability, provided that the cancelled reservation is not reserved by another Discovery member, Owner, guest or person. It is a further condition that if the cancelled reservation causes expired Discovery Credits, those Credits shall be forfeited and not applicable to be used to reinstate the cancelled reservation.
- d. If a Discovery member does cancel a reservation outside allowable cancellation periods, the number of Discovery Credits used to make the reservation will be forfeited unless an exception as outlined in clause 9(c).
- e. A Discovery member whose Discovery Credits have been forfeited under clause 9(c) may have their Discovery Credits reinstated under the following circumstances so long as any alternative reservation and stay adheres to clause 3:
  - i. if another reservation is made for the exact same Resort Apartment type, size and dates the Discovery member cancelled outside of the allowable period; or
  - ii. where sufficient and reliable documentary evidence is provided to demonstrate that the cancellation was due to the death or serious medical condition of a Discovery member, their immediate family member or a guest that was scheduled to accompany the Discovery member on the reserved travel.

- f. If a Discovery member's Discovery Credits are reinstated under clause 9(d) they can only be given the same Credit Expiry date they would otherwise have if they were never used in the first instance.
- g. Aside from clauses 9(a), 9(b) and 9(c), Discovery members are entitled to reduce the number of nights reserved, however the Discovery member will be charged a cancellation fee and forfeit Discovery Credits. The Discovery Credits forfeited by the Discovery member will equal the difference in the number of Discovery Credits used to reserve the resort apartment prior to the reduction and the number of Discovery Credits used to reserve the resort apartment immediately after the reduction.
- h. Aside from clauses 9(a), 9(b) and 9(c), Discovery members are entitled to downgrade the type of reserved Resort Apartment, however the Discovery member will be charged a cancellation fee and forfeit Discovery Credits. The Discovery Credits forfeited by the Discovery member will equal the difference in the number of Discovery Credits prior to the downgrade and the number of Discovery Credits immediately after the downgrade.
- i. A Discovery member cancelling any part of a seven (7) night minimum stay during Red Season split between two (2) or more resorts must immediately replace that cancelled part of the split with an equal or greater number of nights and an equal or greater number of Discovery Credits. If the Discovery member does not replace the cancelled part in accordance with this regulation, the entire seven (7) night minimum stay must be cancelled with a 48-hour waiting period between the cancellation and a new reservation.
- j. There is also a 48-hour waiting period between a cancellation and a new reservation if a Discovery member cancels a one (1) week reservation during Red Season and requests that same reservation for less than one (1) week within nine (9) months or less from the first date of stay.

#### 10. USE OF RESORT APARTMENTS

- a. No resort apartment can be held or used for a reason other than accommodation purposes.
- b. Only Discovery members registered on the Discovery membership can complete a reserved stay at a resort apartment. Friends and family may accompany the member at a resort apartment but the member must be present at any resort apartment stay unless an exemption in clause 10(c) applies.
- c. Discovery members do not have to be present for a stay in a resort apartment if prior consent has been obtained from Wyndham Destinations Asia Pacific in writing, which will only be provided in the following circumstances:
  - i. where sufficient and reliable documentary evidence is provided to demonstrate that the Discovery member cannot travel due to a medical condition or carer's commitments; or
  - ii. where the Discovery membership has been permanently transferred in accordance with clause 14.
- d. Discovery members must report to Reception to check-in and check-out of their resort apartment. A copy of the confirmation of reservation together with photo identification is required at check-in.
- e. Check-in time is usually 4pm and check-out shall usually be no later than 12pm. Check-in/check-out times may vary between Resorts and will be advised when the reservation is confirmed.
- f. Wyndham Destinations Asia Pacific and its related entities are not responsible for any belongings left at a Resort or in a Resort Apartment by Discovery members or Discovery members' guests. Discovery members or Discovery members' guests are responsible for removing all personal property from the Resort Apartment prior to check-out.
- g. The Resort may designate a specific area from time to time for Discovery members to store items for short periods before check-in or after departure, however, neither Discovery members nor Discovery members' guests may keep personal

property on the resort other than in the resort apartment during occupancy.

- h. Resort apartments should be locked when unattended and any suspicious or unusual activity should be reported immediately to the resort manager.
- i. If the Discovery member or Discovery member's guests fail to vacate a resort apartment by check-out time on the last day of the reserved period of occupancy, the Discovery member will be liable for all costs incurred as a result of any delay in making the Resort Apartment available for other guests and may be subject to other consequences including possible suspension of their Discovery membership.
- j. The resort manager has a master key to all resort apartments and in the case of an emergency, maintenance or inspection purposes may enter, or may direct another Resort staff member to enter, a resort apartment. The Discovery member will be notified of the entry and the reason for the entry as soon as reasonably possible where required.

**11. OCCUPANCY LIMITS**

- a. The number of persons, including children of any age, which may occupy a resort apartment, in most cases, is as follows:

OCCUPANCY LIMITS			
Studio/Hotel	2 persons	1-Bedroom	4 persons
2-Bedroom	6 persons	3-Bedroom	8 persons
4-Bedroom	8 persons		

- b. Occupancy limits may vary between resorts and Discovery members will be advised of the relevant occupancy limits at the time of making a reservation.
- c. These occupancy limits will be strictly enforced and Discovery members checking into a Resort with more persons in their party than the applicable occupancy limit must either:
  - i. reserve a bigger resort apartment or additional resort apartment(s) (if available), which will require further Discovery Credits and/or Rental Credits and applicable housekeeping fees;
  - ii. reduce the number of persons in the party; or
  - iii. vacate the Resort.
- d. All persons under the age of 18 years shall only occupy a Resort Apartment under parental supervision.

**12. CARE OF RESORT APARTMENTS AND DISPOSAL OF RUBBISH**

- a. Discovery members are responsible for any damage or loss of any items or furnishings in the resort apartment that occur during the occupancy by a Discovery member or a Discovery member's guest(s).
- b. Charges for any missing items, damage during occupancy, excessive cleaning or charges for any unpaid services will be billed to the Discovery member. Non-payment of such charges will be cause for suspension of future reservations and privileges under the Discovery membership until paid in full.
- c. All persons staying at a resort shall have regard for and keep clean, neat and tidy their resort apartment and all other parts of the resort. Discovery members and their guests must not leave any garbage, rubbish, waste, disposable napkins, bottles and cans other than in the receptacles provided. In addition to the housekeeping fee, Discovery members can be charged an additional fee for cleaning or rubbish removal of AU\$25 or more if the resort manager deems that the resort apartment has been vacated with an excessive amount of rubbish and/or in an unacceptable condition.
- d. Each resort apartment has an inventory list of major items and Discovery members must report any missing items or damage noticed in their assigned resort apartment to the Resort Manager as soon as possible after check-in. Upon each check-out, an inspection of the resort apartment, its furnishings and equipment is conducted.

- e. No structural changes, reorganisation or removal of furniture, wall hangings, floor coverings or redecorating of any type within the resort apartments or other areas of the property is permitted.

**13. USE OF RESORT AND RESORT FACILITIES**

- a. Only Discovery members and their guests who are occupying Resort apartments may use resort facilities. Discovery members may have daytime guests within the occupancy limit allowed for the apartment.
- b. Each Resort may establish and post specific rules about the orderly management of each Resort. Discovery members and Discovery members' guests must abide by these specific resort rules.
- c. Discovery members and Discovery members' guests must respect all other resort users, resort staff and guests as well as the resort itself through reasonable behaviours including being mindful of noise, usage of resort facilities and other matters relating to an orderly use of the resort.
- d. Parents are responsible for the conduct of their children who are expected to play and behave in a manner that does not create any undue disturbance to the enjoyment of other resort users or cause damage to property.
- e. No animals or pets, including reptiles and birds, may be brought onto the Resort grounds or into resort apartments, including in any type of vehicle, except for those used in the assistance of visually impaired persons.
- f. No signs, advertisement, notice or other lettering shall be exhibited, displayed, inscribed, painted or affixed to or on any part of the Resort.

**14. TRANSFER AND ASSIGNMENT OF DISCOVERY MEMBERSHIP**

- a. A Discovery membership is not assignable, however it may be transferred at the absolute discretion of Wyndham Destinations Asia Pacific where:
  - i. sufficient and reliable documentary evidence is provided to demonstrate that the Discovery member wishes to transfer their Discovery membership for one of the following reasons:
    - personal reasons;
    - medical reasons;
    - work commitments;
    - relocation; or
    - financial hardship; and
  - ii. the person (or persons) that the Discovery member wishes to transfer the Discovery membership to meets the Qualification Criteria as assessed by Wyndham from time to time.
- b. Requests for transfers must be directed to the Discovery Program Manager at [discoveryteam@wyn.com](mailto:discoveryteam@wyn.com) and will be considered on a case by case basis.
- c. For any approved transfers, the Discovery membership must be paid in full and no monies must be outstanding on the Discovery membership (including monies for instalment payments and housekeeping charges).

The following transfer fees apply:

DESCRIPTION	TYPE	FEE
Deceased estate transfer	Transfer, combine or remove	No charge
Add/remove Discovery member	Add or remove	AU\$100 per change
Transfer Discovery membership to another (qualified*) person	Transfer (family or resale)	AU\$200 per change

\*Refer clause 14(a)(ii)

- d. If a Discovery membership is transferred, any Developer incentives or Developer subsidies offered and attached to that Discovery membership will also be transferred and the transferring (former) Discovery member will no longer have claim to any of these Developer incentives or Developer subsidies.
- e. In the instance where there is a dispute between original Discovery members registered on the Discovery membership, due to separation or other reasons, the Discovery membership may be suspended until the dispute is resolved between affected parties.
15. TAXES
- a. Discovery members are responsible for taxes (if any) related to their usage of Resorts and/or Resort Apartments such as sales tax or Services Turnover Tax.
16. LIABILITY
- a. Discovery members and their guests occupy the resort and resort apartments at their own risk and release and indemnify the resort staff, Wyndham, Club Wyndham South Pacific and all related entities, officers and employees from and against any and all action or demands due to any damage, loss, costs, injury or death caused by or as a result of the Discovery members' or guests' act, use, misuse or occupation of the Resort or Resort Apartments, except to the extent that it was caused by the wilful or negligent act of the resort, Wyndham or Club Wyndham South Pacific.
17. DELINQUENCY
- a. Discovery reservation requests will not be confirmed, and may be cancelled, if a Discovery member is delinquent in the payment of any amount owed on the purchase of their Discovery membership.
- b. Discovery memberships may be suspended and / or cancelled without refund, if a Discovery member is delinquent in the payment of any amount owed on the purchase of their Discovery membership. Every attempt will be made by Wyndham to contact Discovery members in arrears prior to taking action.
18. COMPLAINTS AND COMPLIMENTS
- a. If you have issues, concerns, feedback or praise about your Discovery membership please contact your Discovery Service Specialist Team on AU 1300 306 026 or NZ 0800 306 026 or at [discoveryteam@wyn.com](mailto:discoveryteam@wyn.com).
19. ENFORCEMENT AND VIOLATIONS OF THESE GUIDELINES
- a. Resort staff have full authority to implement these Discovery Program Guidelines and any specific Resort rules and regulations.
- b. Failure of a Discovery member to abide by these Discovery Program Guidelines may result in the temporary or permanent suspension of the Discovery members' rights and privileges under the Discovery Program.
- c. If Discovery member status is temporarily suspended, the Discovery member will be unable to make reservations or otherwise deal with their Discovery Credits or Discovery membership until such suspension has been lifted.
- d. If Discovery member status is permanently suspended, the Discovery member may no longer be entitled to any benefit of the Discovery Program and may no longer be entitled to Developer incentives or Developer subsidies, at the discretion of Wyndham.
20. BECOMING A CLUB WYNDHAM SOUTH PACIFIC OWNER
- a. Discovery members may choose to purchase Premier Vacation Credits in the Club from Wyndham, the Developer of the Club, at any time after their Activation Date and prior to Membership Expiry, which will provide access to all benefits available as part of the ownership, provided all Discovery members registered on the Discovery membership:
- continue to meet applicable qualification criteria; and
  - attend and complete another Wyndham Destinations Asia Pacific timeshare sales presentation during the duration of their Discovery membership or at a stay in a resort using Discovery Credits.
- b. If the Discovery member chooses to join Club Wyndham South Pacific as outlined in clause 20(a), they will be entitled to the following Developer incentives from the Activation Date up to and including the Membership Expiry Date (as outlined in clause 2(b)), unless otherwise authorised by Wyndham:
- A price freeze on Club Wyndham South Pacific Premier Vacation Credits for the same price per Vacation Credit available on the date the Discovery member joined the Discovery Program ("Price Freeze"); PLUS
  - The amount the Discovery member has paid towards the Discovery membership, less an administration fee and any GST, can be applied as a discount to the purchase price of Premier Vacation Credits ("Transferable Equity").
- c. Developer incentives can only be used by Discovery members if all criteria in clause 20(a) are met and the purchase of Vacation Credits from Activation Date up to and including Discovery membership Expiry Date (unless otherwise authorised by Wyndham).
- d. Vacation Credits in the Club Wyndham South Pacific are issued by Wyndham Vacation Clubs South Pacific Limited ACN 090 503 923, AFSL 225200 and sold by Wyndham Destinations Asia Pacific Pty Ltd as a corporate authorised representative. Please consider the current Product Disclosure Statement located at [www.clubwyndhamsouthpacific.com/disclosure](http://www.clubwyndhamsouthpacific.com/disclosure) when deciding whether to purchase Club Wyndham South Pacific Vacation Credits.
- e. Wyndham reserves the right to extend the offer of Developer incentives as outlined in clause 20(b) to Discovery members whose Discovery membership has expired at its complete discretion.
- f. In the instance where the Discovery member does become a Club Wyndham Owner, any unused Discovery Credits:
- will retain their original Credit Expiry date; and
  - will be applied to their new Club Wyndham South Pacific Owner account within 30 days from the date of that Club Wyndham South Pacific Owner account transmitting for use (unless held in a pending Discovery member reservation); and
  - are only available to be used in Club Wyndham South Pacific Apartments with a 13-month booking window.
- g. Unused Discovery Credits will not:
- be eligible for any other travel or accommodation options outside of the Club Wyndham South Pacific, including (but not limited to) exchanges through exchange companies, Travel by Wyndham products or services, Associate Resorts or Affiliate Resorts; nor
  - count toward a Lifestyle by Wyndham membership tier.



# Lifestyle

BY WYNDHAM

## WELCOME GIFT FOR DISCOVERY MEMBERS

Our welcome gift to you is a complimentary Lifestyle by Wyndham membership. Follow the steps below to sign up and access exclusive deals from over 4,500 leading partners in Australia and 2,000 businesses in New Zealand.

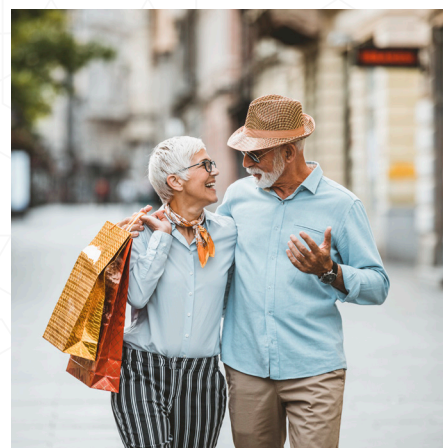
Start saving money and enjoying more experiences today!



Save up to **5%** on groceries and fuel with major retailers.



Save up to **40%** on entertainment like movie tickets, concerts and shows.



Get paid for shopping with cashback offers from thousands of retailers.

### Sign up steps:



Visit [lifestylebywyndham.com](https://lifestylebywyndham.com)



Click Sign in or Sign Up (First time logging in? Please Sign Up first)



Enter your Discovery member number and the password you set at Sign Up



[lifestylebywyndham.com](https://lifestylebywyndham.com)

Lifestyle by Wyndham ('Lifestyle') is a membership program provided by Wyndham Destinations Asia Pacific Pty Ltd ACN 090 083 613 ('the Developer'). The benefits available under the Lifestyle program are provided at the complete discretion of the Developer, which may revoke, modify or add benefits at any time at its discretion without prior notice. Only Lifestyle members who are also Club Wyndham South Pacific owners are entitled to participate in the fee-based tiered benefit membership program. All other Lifestyle members are entitled to take advantage of the offers available to Lifestyle members.

# WHY CLUB WYNDHAM SOUTH PACIFIC?

The answer is easy. Ownership in Club Wyndham South Pacific means you can take the holidays you deserve at a price you can afford. From the busy streets of Sydney to a Japanese onsen or the calming shores of Hawaii - wherever your imagination takes you, we welcome you in with an open door, a warm smile, and exciting new possibilities at every turn. Open the door to a whole new world of holiday possibilities and join close to 60,000 owner families in the South Pacific who, like you, have a passion for travel and enjoy a fantastic holiday lifestyle.

## SOME OF THE WONDERFUL BENEFITS YOU WILL GAIN ACCESS TO AS A CLUB WYNDHAM PREMIER OWNER INCLUDE:

- Premier ownership for the life of the club, which is an asset that may be passed down to your children and grandchildren, sold or transferred
- Access to 52 current Club Wyndham South Pacific resorts across Australia, New Zealand, Europe, Fiji, Japan, Thailand and the United States of America
- Access to all future resorts that may be introduced to the Club
- Paying for vacation credits once and having them renew each year of ownership for use in all club apartments
- Ability to save vacation credits from the year before and borrow from the year ahead, providing up to three years of credits for one large holiday
- 13-month reservation booking window
- Ability to make reservations for guest use on behalf of family and friends
- Access to Bonus Time
- Option to access additional benefits provided by the Developer, including Fun Time, One Time Credits and the Lifestyle by Wyndham program
- A dedicated Owner Services Team to assist with all your reservations and enquiries
- Online access to view your ownership as well as make and change reservations
- An exclusive travel agency, Travel by Wyndham
- Free Owner Information programs to help you get the most out of your ownership
- Fantastic owner promotions and offers via email, online and social media

"Wyndham Destinations Asia Pacific Pty Ltd ACN 090 083 613 is a corporate authorised representative of Wyndham Vacation Clubs South Pacific Limited ACN 090 503 923 AFSL 225200 the issuer of the WorldMark South Pacific Club ARSN 092 334 015. Please consider the Product Disclosure Statement located at <https://clubwyndhams.com/disclosure/> when deciding whether to acquire this product."

# CLUB WYNDHAM

# TAKING THE NEXT STEP

Now that you have enjoyed quality time with your loved ones and experienced some of the amazing resorts and benefits of the Club Wyndham South Pacific through your Discovery membership, you have an opportunity to take the next step and enjoy a lifetime of holidays with a Club Wyndham South Pacific Premier ownership.

As a Discovery member, you will have access to the following Developer incentives should you choose to become a Club Wyndham South Pacific Premier Owner during your Discovery membership:

- A **Price Freeze** on Club Wyndham South Pacific Premier Vacation Credits for the same price per Vacation Credit available on the date you joined the Discovery Program; PLUS
- **Transferable Equity** where the amount you have paid towards your Discovery membership, less an administration fee and GST, is applied as a discount to the purchase price of your Premier Vacation Credits.

These benefits are valid from your Activation Date until your Discovery membership Expiry date, even if you have used all of your Discovery Credits on amazing holidays!

**To find out how to redeem your Discovery membership Developer incentives, please contact your Discovery Service Specialist Team:**

Phone **AUS 1300 306 026 • NZ 0800 306 026**

Email **discoveryteam@wyn.com**

Web **discoverybywyndham.com/nextstep**

Please note: There is no obligation to join Club Wyndham South Pacific during the term of a Discovery membership. Wyndham reserves the right to extend the offer of Developer incentives to Discovery members whose Discovery membership has expired, at its complete discretion.





[discoverybywyndham.com](http://discoverybywyndham.com)  
[#wyndhamholidays](https://www.instagram.com/wyndhamholidays)

**Wyndham Destinations Asia Pacific Pty Ltd**  
ACN 090 083 613

**Office address:**

Wyndham Destinations Asia Pacific  
Wyndham Corporate Centre  
1 Corporate Court  
Bundall QLD 4217 Australia

**Postal Address:**

**PO Box 7493**  
**Gold Coast Mail Centre QLD 9726 Australia**

Australia 1300 306 026  
New Zealand 0800 306 026  
International +61 7 5512 8052

[discoveryteam@wyn.com](mailto:discoveryteam@wyn.com)  
[discoverypayments@wyn.com](mailto:discoverypayments@wyn.com)

**What's on your  
bucket list?**

[clubwyndhamsp.com](http://clubwyndhamsp.com)